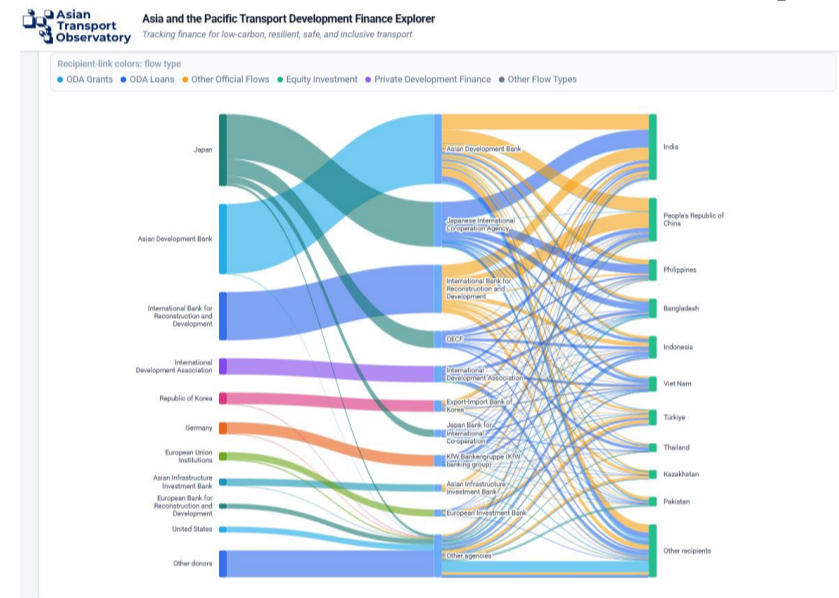


Asian Transport 2035 Outlook: Investment Needs of Asian LMICs



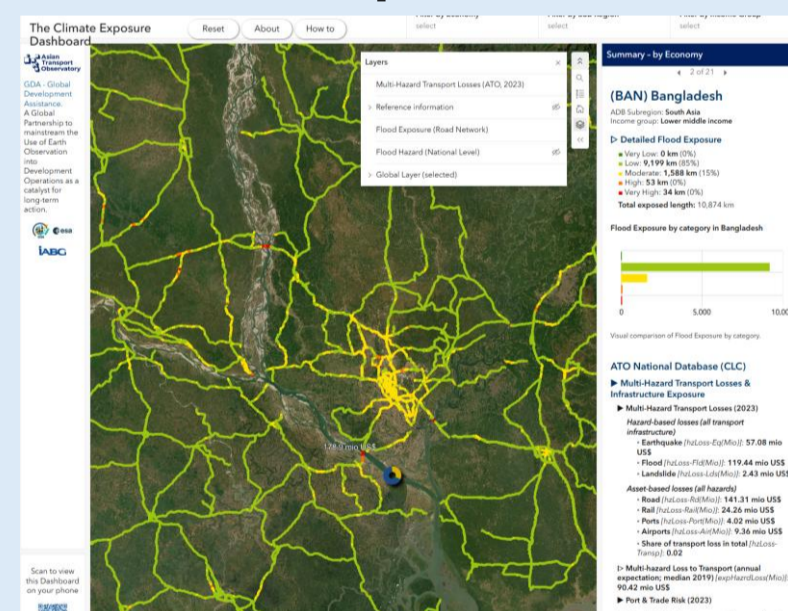
The Asian Transport 2035 Outlook estimates that low- and middle-income economies in Asia and the Pacific will need about US\$2.6 trillion per year for transport infrastructure between 2025 and 2035, more than triple past annual investment levels. It highlights the need to fund not only new infrastructure, but also maintenance, safety, rail, ports, airports, electric mobility, climate resilience, and better prioritization.

Asia and the Pacific Transport Development Finance Explorer



The Asia and the Pacific Transport Development Finance Explorer is a new interactive ATO platform that makes transport development finance data easier to explore and use. Built mainly around OECD Creditor Reporting System data, and results of readiness assessment through the Accelerating Innovation in Transport, under the Pathways for Decarbonization of the Transport Sector project supported by the UK-FCDO.

Climate Exposure Dashboard for Transport



With support from European Space Agency and ADB through the Global Development Assistance Program, the Asian Transport Observatory collaborated with iABG to develop a prototype Climate Exposure Dashboard for Transport. The tool combines Earth observation data with open geospatial datasets to visualize where major road networks, particularly motorways, may be exposed to flood hazards across the region.

Transport in Review: Working Paper Series



The Transport in Review series provides concise, evidence-based snapshots of transport trends, policies, and priorities across Asia and the Pacific. It brings together data and analysis from the Asian Transport Observatory to help countries and partners understand progress, identify gaps, and support more informed transport planning and investment decisions.

Visit the ATO portal

asiantransportobservatory.org

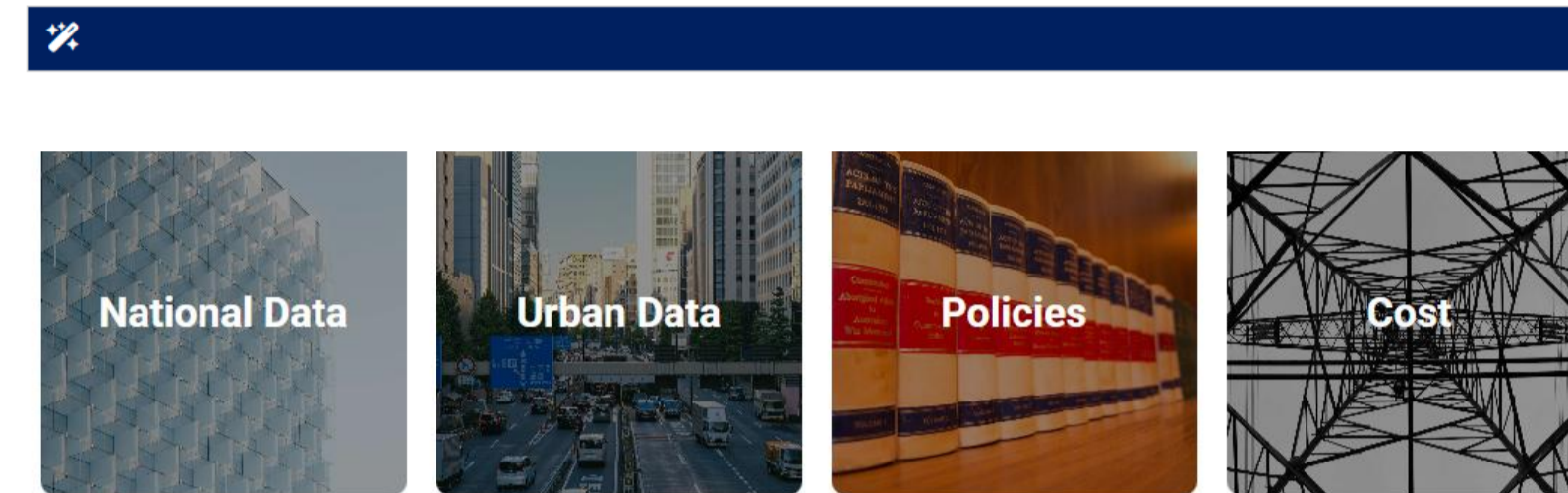
Contact us
info@asiantransportobservatory.org



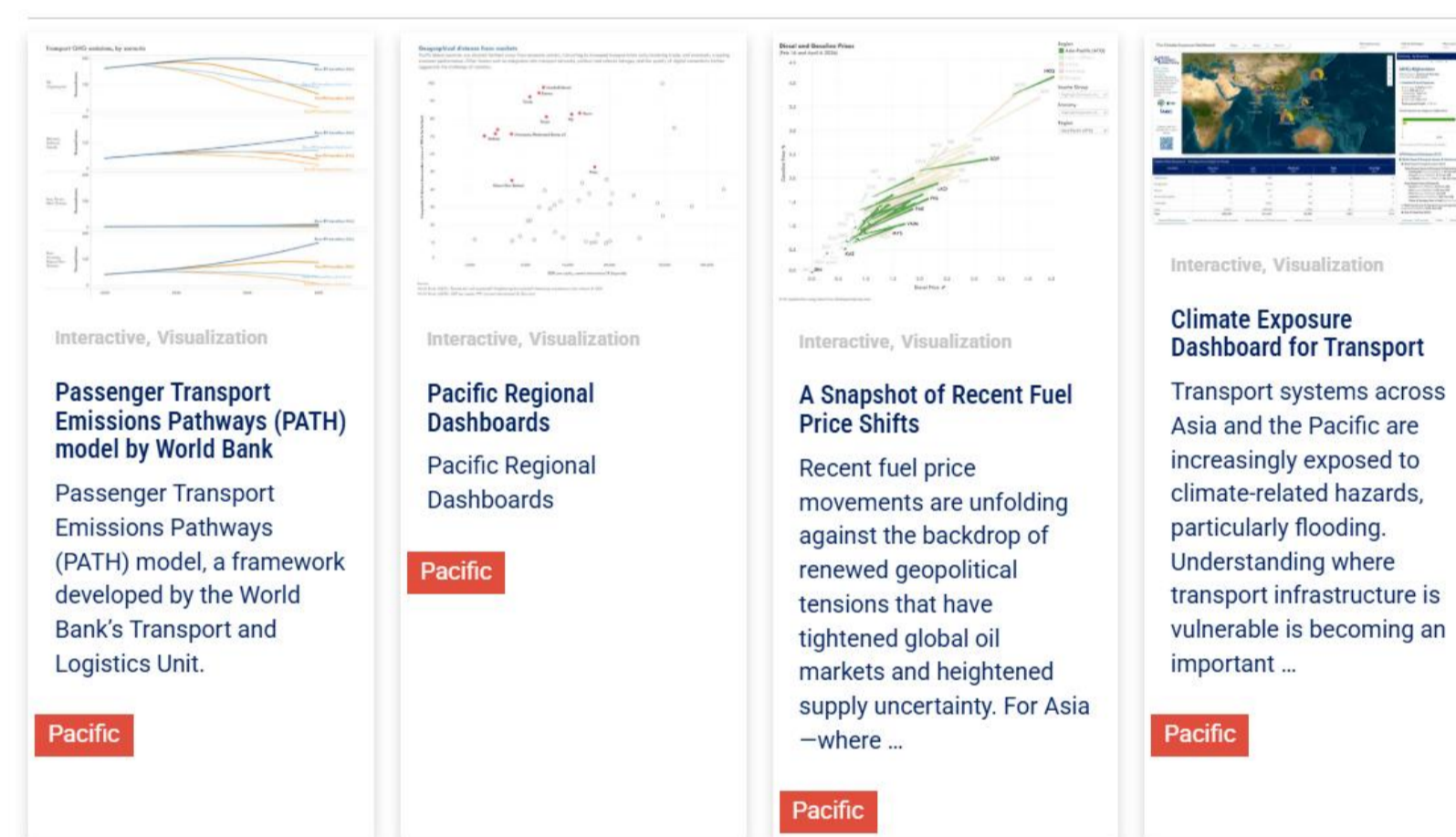
Pacific Transport Observatory

Knowledge base on transport in the Pacific

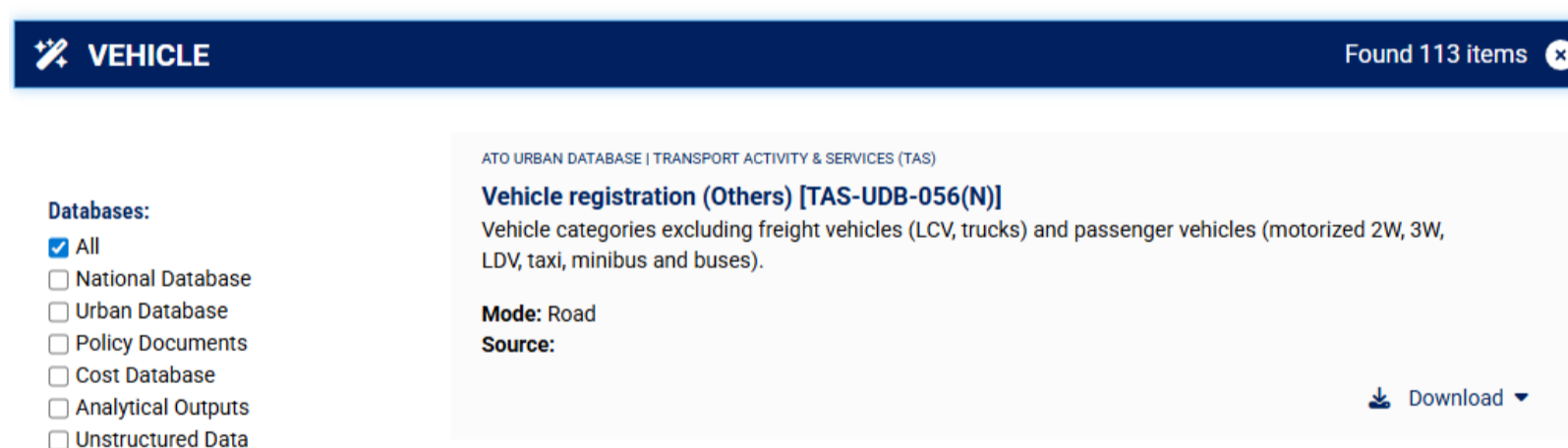
A Pacific-focused platform of the Asian Transport Observatory that gathers and shares comprehensive datasets, generate unique policy insights, and delivers novel knowledge products rooted in groundbreaking analysis.



Latest insights



ATO Data and Information Catalog



Platform developed with the support of

The Asian Transport Observatory (ATO) was initiated by the Asian Development Bank (ADB) and is supported by ADB alongside the Asian Infrastructure Investment Bank (AIIB). The Pacific platform further draws on support from the World Bank.



Pacific Transport Observatory

The Pacific Transport Observatory platform has been integrated into the ATO website to serve as a dedicated space for accessing data, tools, knowledge products relevant to the Pacific sub-region and the Pacific Island Countries. It also features a new mechanism called "Data and Information Catalogue" which houses non-ATO formatted data, and relevant information assets, in addition to the data in the ATO table format and indicator structure. The development of this portal was supported by the World Bank, through the Accelerating Decarbonization of Road Transport in Papua New Guinea and the Pacific Islands" programmatic advisory services and analytics (PASA) in addition to the support being provided by the Asian Development Bank and the Asian Infrastructure Investment Bank to the ATO.

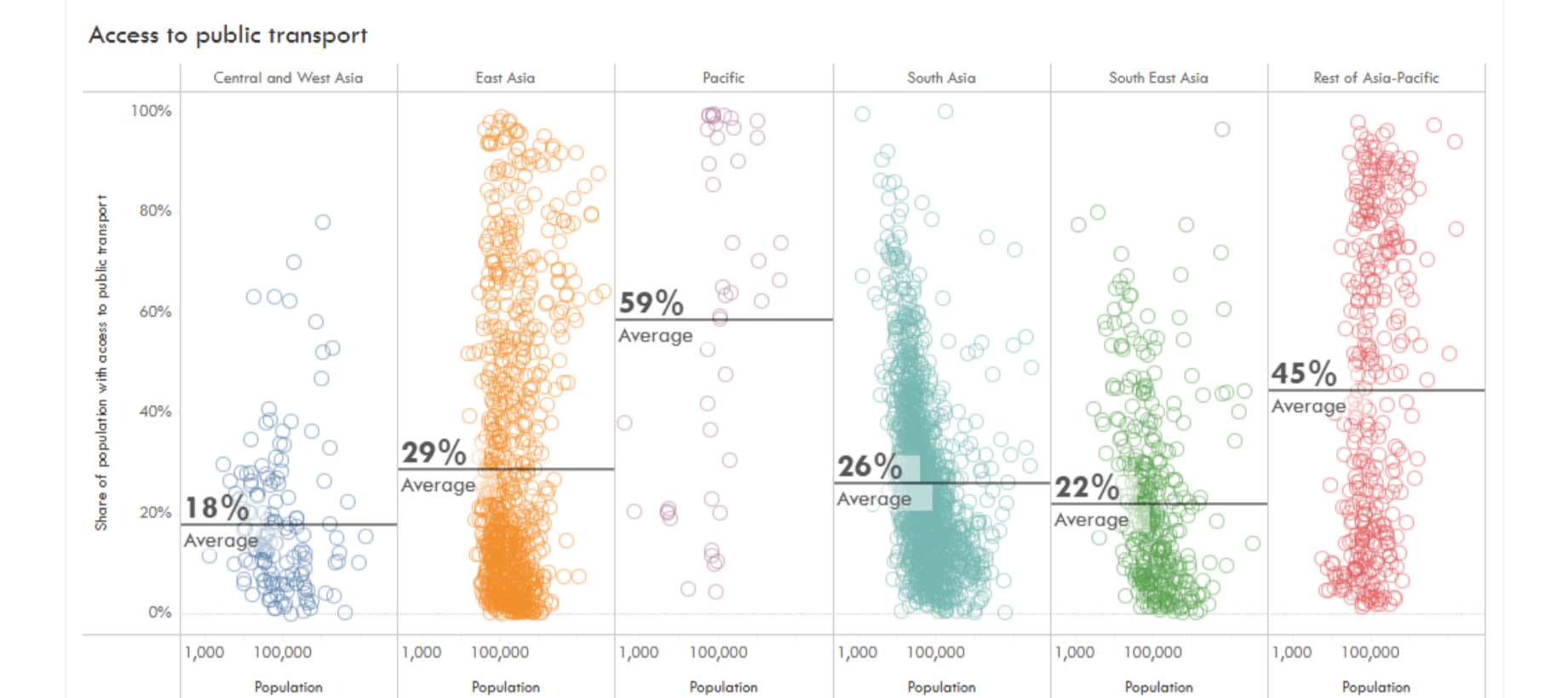
PALAU

COUNTRY DASHBOARD

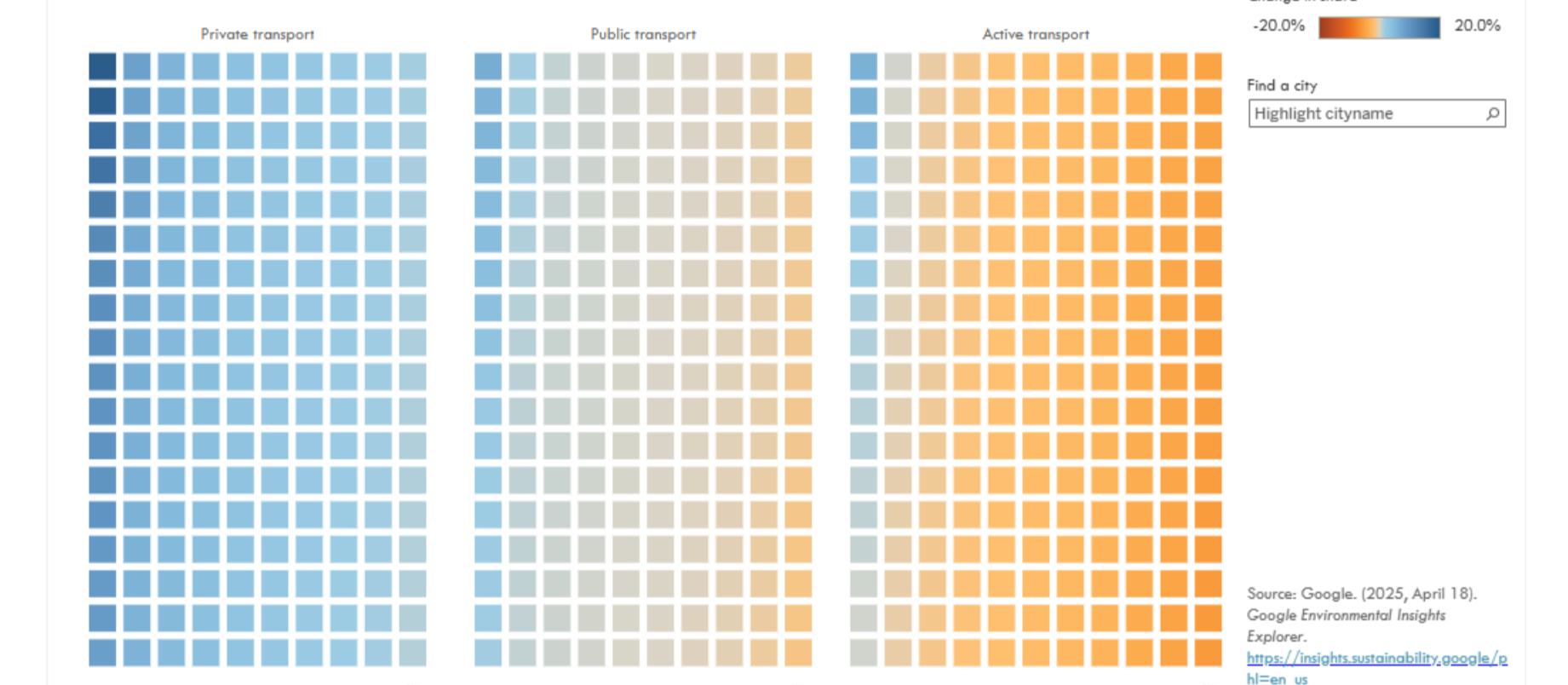
Ensure access to sustainable transport for all | Advance low- or zero-carbon, resilient, and environmentally sound transport systems | Enhance efficiency

Ensure access to sustainable transport for all

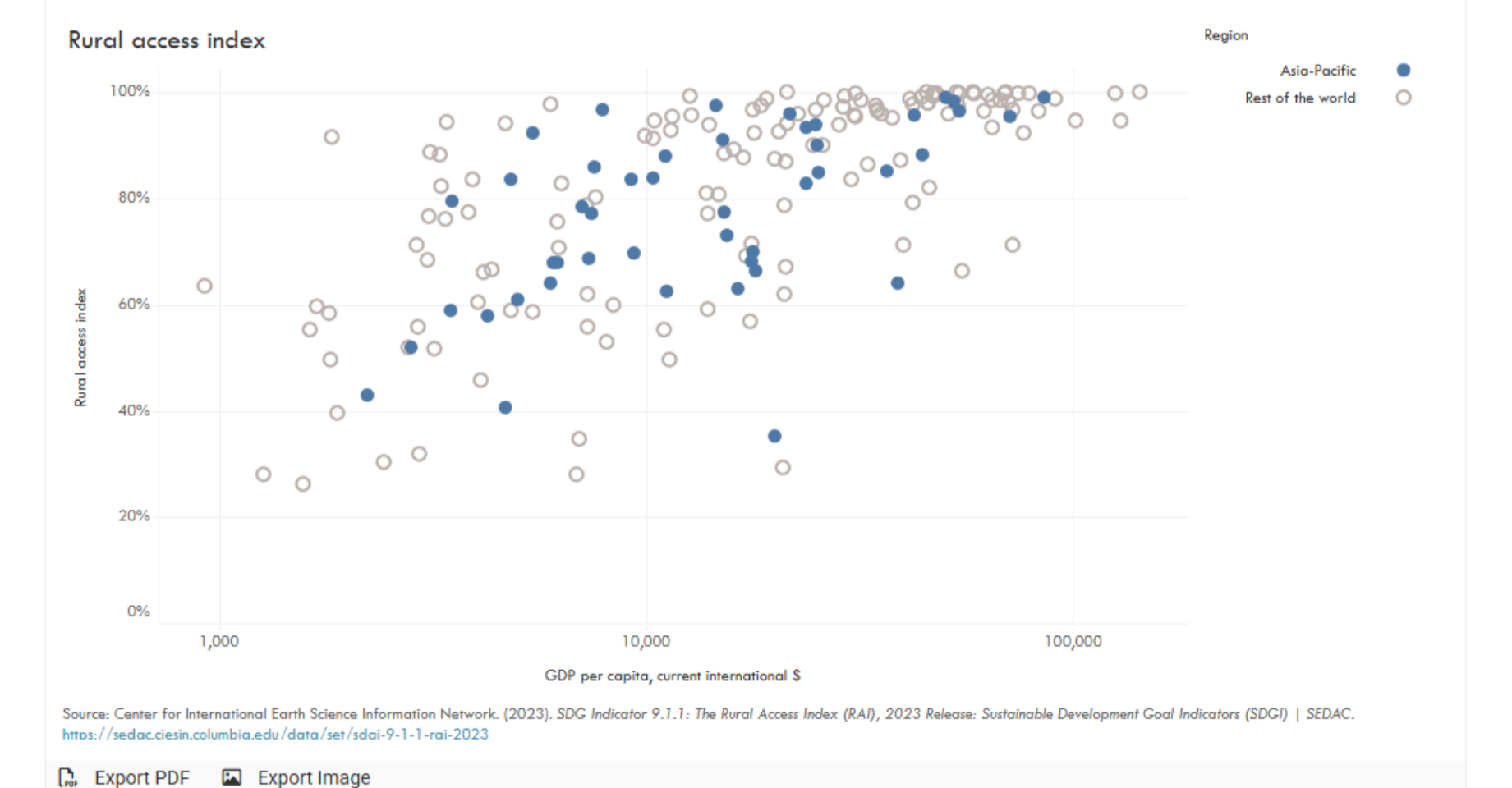
Public transport access



Modal shift in cities



Rural access index



Country Dashboards for the UN Decade of Sustainable Transport

These country dashboards provide a concise, country-level view of transport trends, policies, and priorities across Asia and the Pacific. Drawing on information available through the Asian Transport Observatory portal, each dashboard brings together key data and insights around the priority areas of the UN Decade of Sustainable Transport. The dashboards are designed to help governments, development partners, researchers, and practitioners quickly understand where each country stands, what progress is being made, and where further action may be needed.