



ASIAN TRANSPORT OBSERVATORY

Alvin Mejia
Co-Team Lead

Towards a Transport Global Intelligence System
February 2026



2.7 trillion USD
transport investment
requirement annually
for Asia and the Pacific

\$53 billion average annual damage to transport infrastructure

~400 million people in Asia-Pacific lacked access to all-season rural roads by 2023

About **1.4 billion** urban residents in the region lacked efficient access to public transit in 2023

~60% of global road crash fatalities in Asia and the Pacific

More than **three-fourths of the population** in Asia was exposed to PM2.5 levels above 25 micrograms per cubic meter

Asia's transport GHG emissions have **surpassed** the combined emissions of North America and Europe

Asia bears **half of the global costs of damage** to transport infrastructure : 40% of rail-related costs, 30% of airport-related costs, and 60% of the ports-related costs

Asian Transport Observatory

Strengthening the knowledge base of transport in Asia-Pacific

A leading platform that gathers and shares comprehensive datasets, generate unique policy insights, and delivers novel knowledge products rooted in groundbreaking analysis.

asiantransportobservatory.org



ATO National Database

Explore over 450 transport indicators from 51 economies divided across nine categories



ATO National Transport Policy Documents Database

Explore close to 1100 transport policy documents in Asia and the Pacific



ATO Urban Database

Explore more than 260 urban level transport indicators across nine categories



ATO Cost Database

Explore more than 1,300 transport-related projects and benchmark their costs within subregions or income groups in Asia and the Pacific



ATO Analytical Outputs

Read about analysis made using ATO transport data and policy information

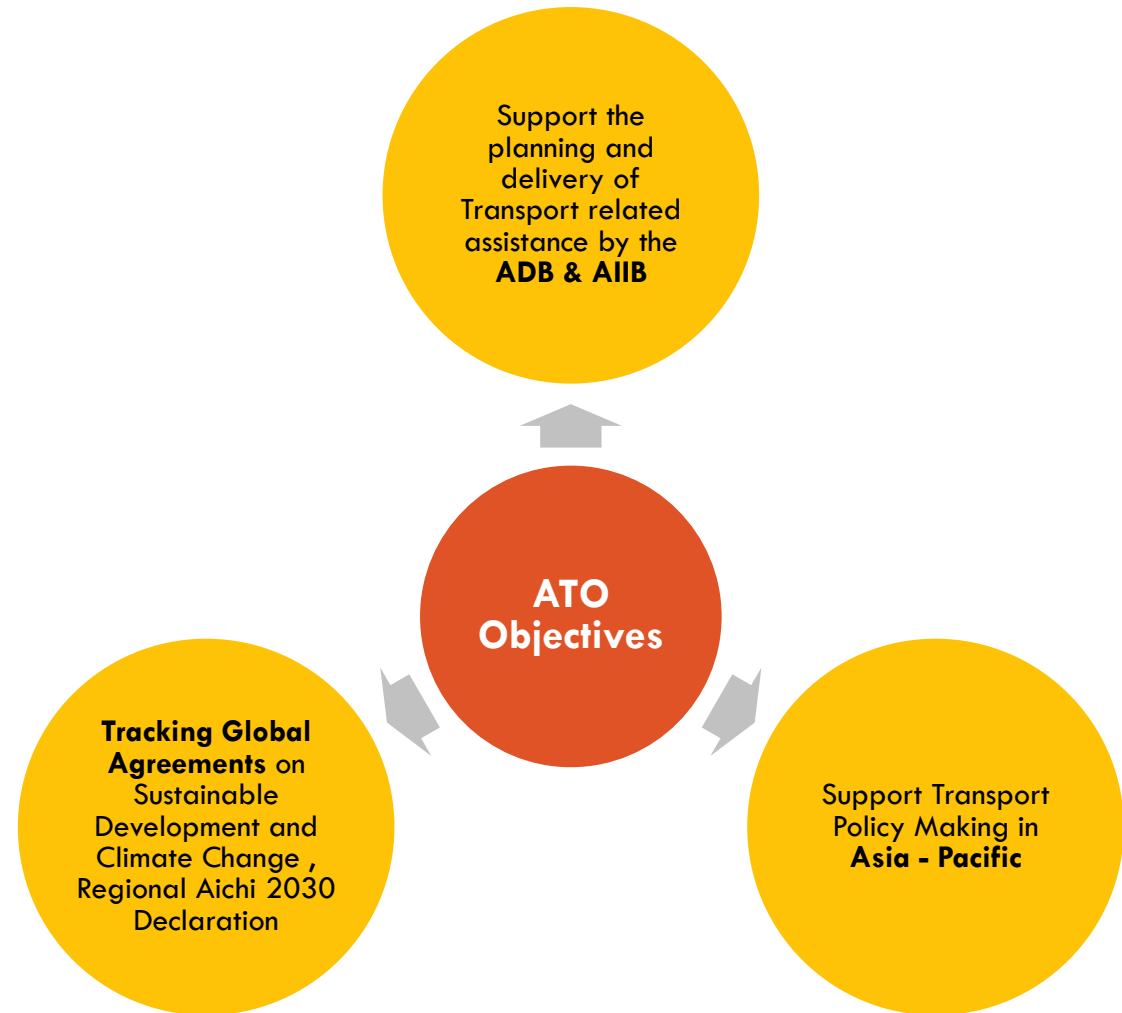
Asian Transport Observatory (ATO): A Catalyst for Sustainable Transport in Asia



52 Economies (ADB Members + Iran and Russia)

460 Urban Centers (412 Asia-Pacific, 48 Others)

50 Urban Centers with a detailed review



We collect, collate, organize data

ATO National Database



507 available indicators

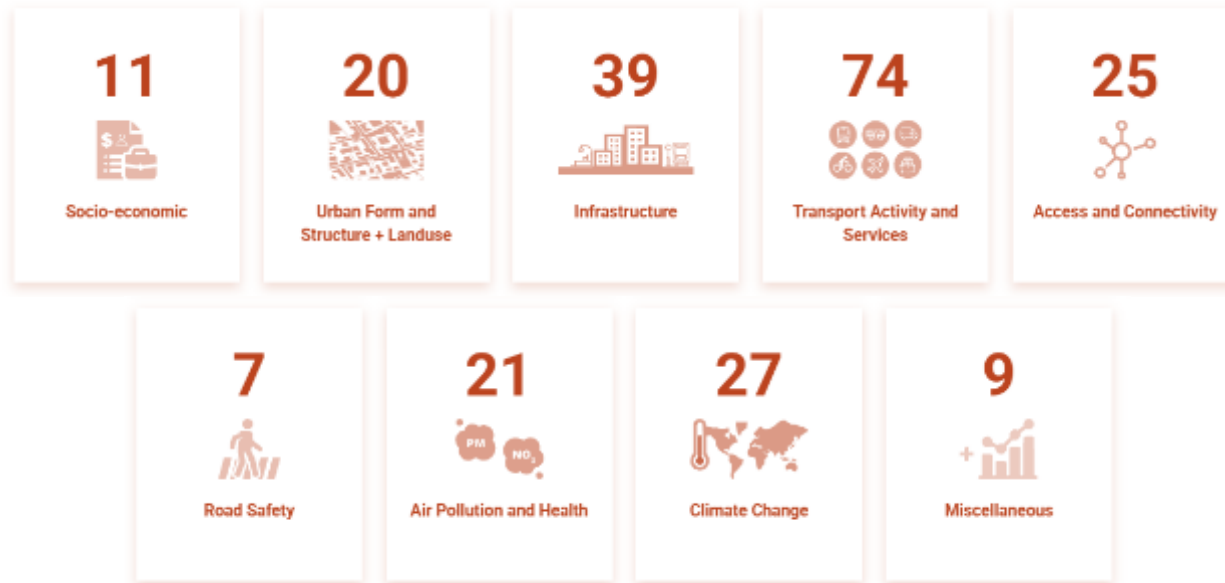
136 unique sources

57% of indicators have multi-year data

27% of indicators have more than 1 source

We collect, collate, organize data

ATO Urban Database



324 available indicators

63 unique sources

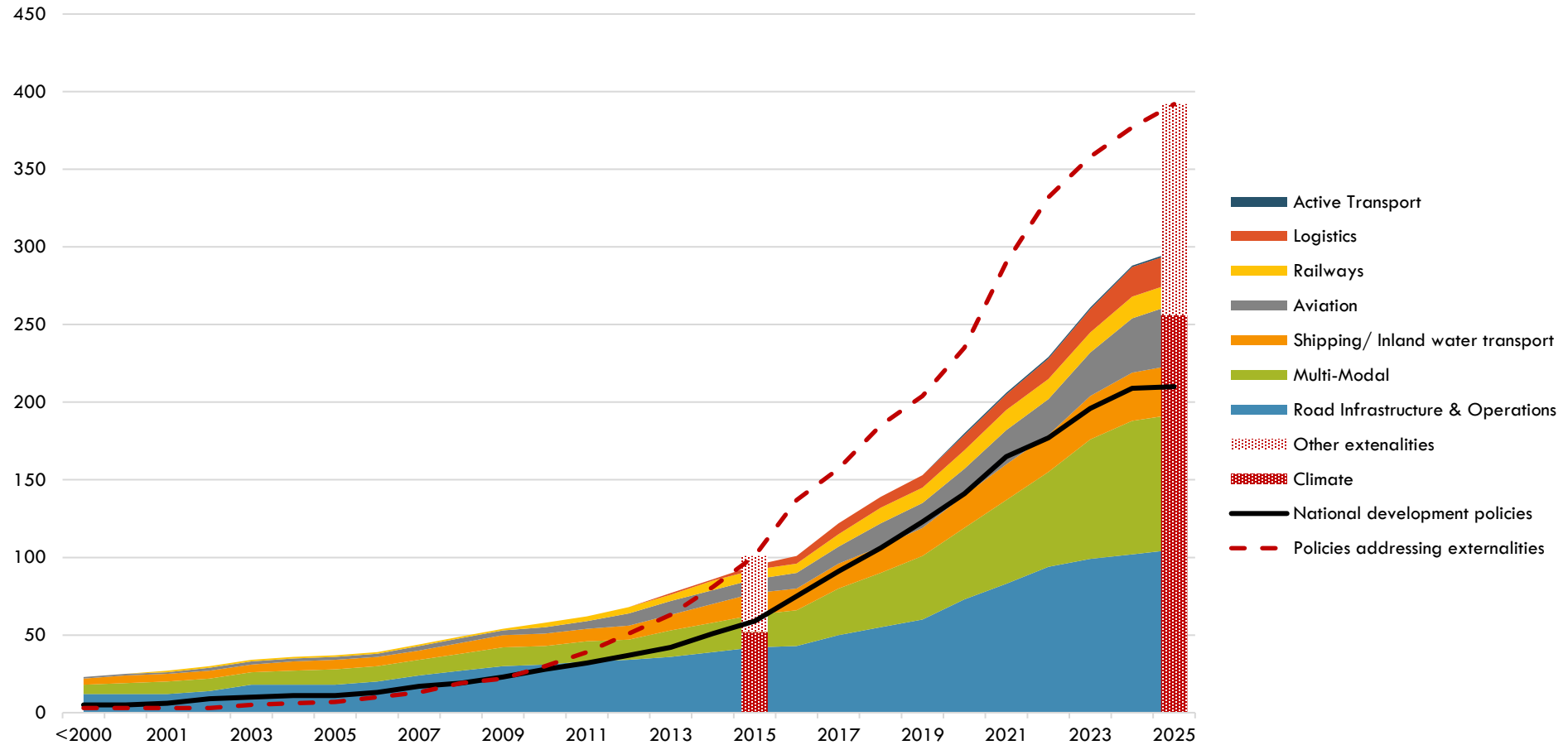
30% from Official Sources

35% indicators have multiple sources

69% have multiple years

We collect, collate, organize data... and policies

Distribution of Transport Policy and Related Documents by Focus Area



For a sample
of 44 countries

1,255+ policy documents

~ 30 documents per country

13,500+ policy measures

~ 300 policy measures per country

1,530+ targets

~ 35 targets per country

We translate data into storylines and narrative

27

Reports (recent)

173

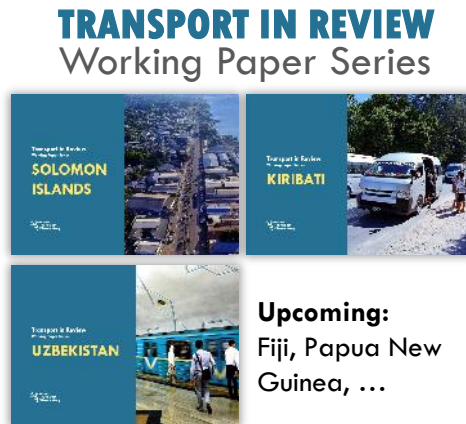
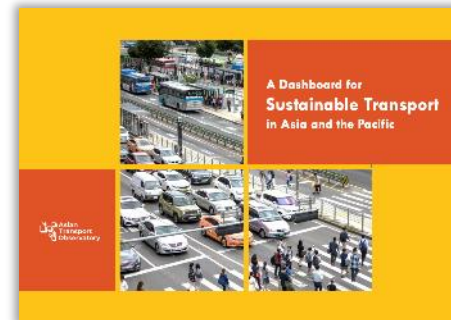
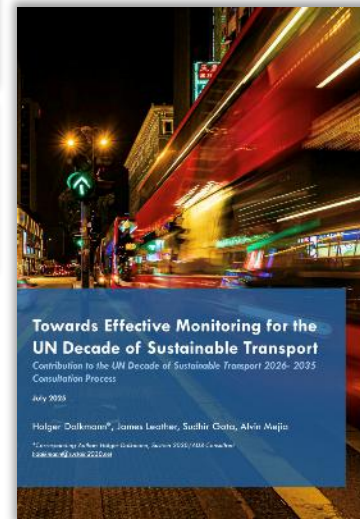
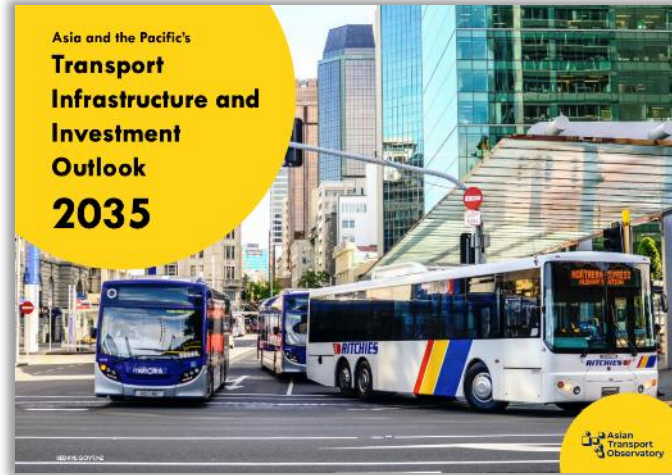
Country Profiles created under 7 categories

30

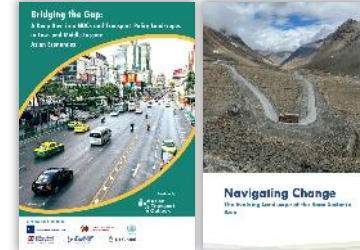
Interactive Visualizations created

400+

Citations (in Phase 3)



Upcoming:
Fiji, Papua New Guinea, ...

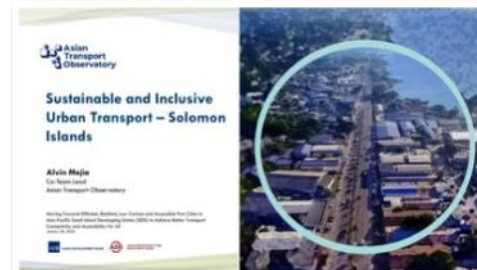
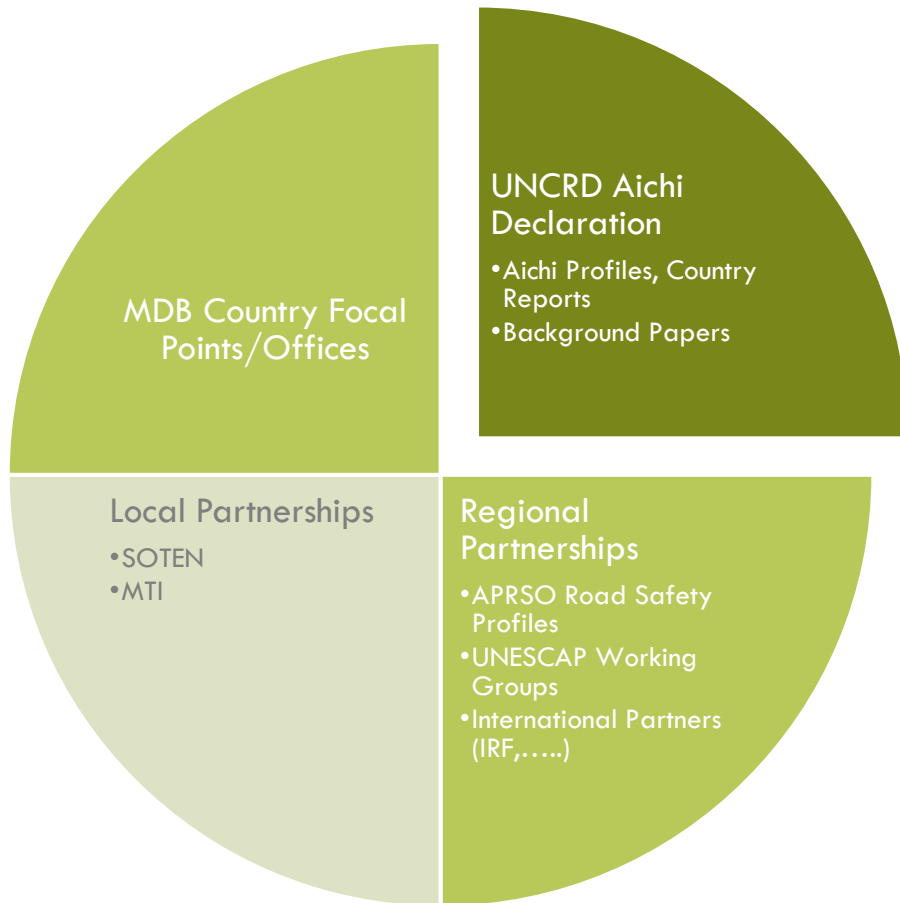


Interactive Country Profiles

- Green Roads
- Transport and Climate Change
- Road safety
- Upcoming: Air Pollution, Aviation



We engage in data validation and sharing, capacity building



2026

ATO Presents Findings - National Workshop for Solomon Islands

2026-01-28
📍 Online



2025

ATO Contributes Evidence Base to Regional Dialogue on Scaling Up E-Mobility Finance in Asia-Pacific

2025-12-01
📍 Bangkok, Thailand



2025

ATO Contributes to the ADB Transport Data Forum

2025-11-30
📍 Manila, Philippines



2025

ATO Joins ESCAP Technical Advisory Group to Support Low-Carbon and Resilient Transport Action Plans

2025-10-20
📍 Online



2025

ATO at the Asia-Pacific Road Safety Conference 2025

2025-09-09
📍 Manila, Philippines




2025

ATO Contributes to ADB's Advancing Transport Leadership Program

2025-05-12
📍 Tokyo, Japan

We increase interest and capacity to digest information




Climate Financing: Transport Sector in Asia - Visualization
2024-11-26

The dashboard presents a detailed overview of climate finance flows specific to regional trends, funding distribution, and sources of investment.

[Interactive](#) [Visualization](#)

Tags: Climate, Climate finance



Transport CO2 Emissions Visualization Tool
2024-11-18

ATO has created a visualization / animation tool using the data from IEA-EDG. Data from 1990 onwards is represented in the visualization tool which aims at magnitude, direction, and speed of change in transport-sector emissions, ...

[Interactive](#) [Visualization](#)

Tags: emissions

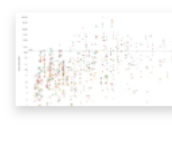


Urban Access to Public Transport - Visualization
2024-10-24

Access to public transport plays a critical role in creating inclusive Access to Public Transport—focuses on how well urban residents' social equity, environmental sustainability, and economic oppor

[Interactive](#) [Visualization](#)

Tags: urban access, cities, public transport, urban centers

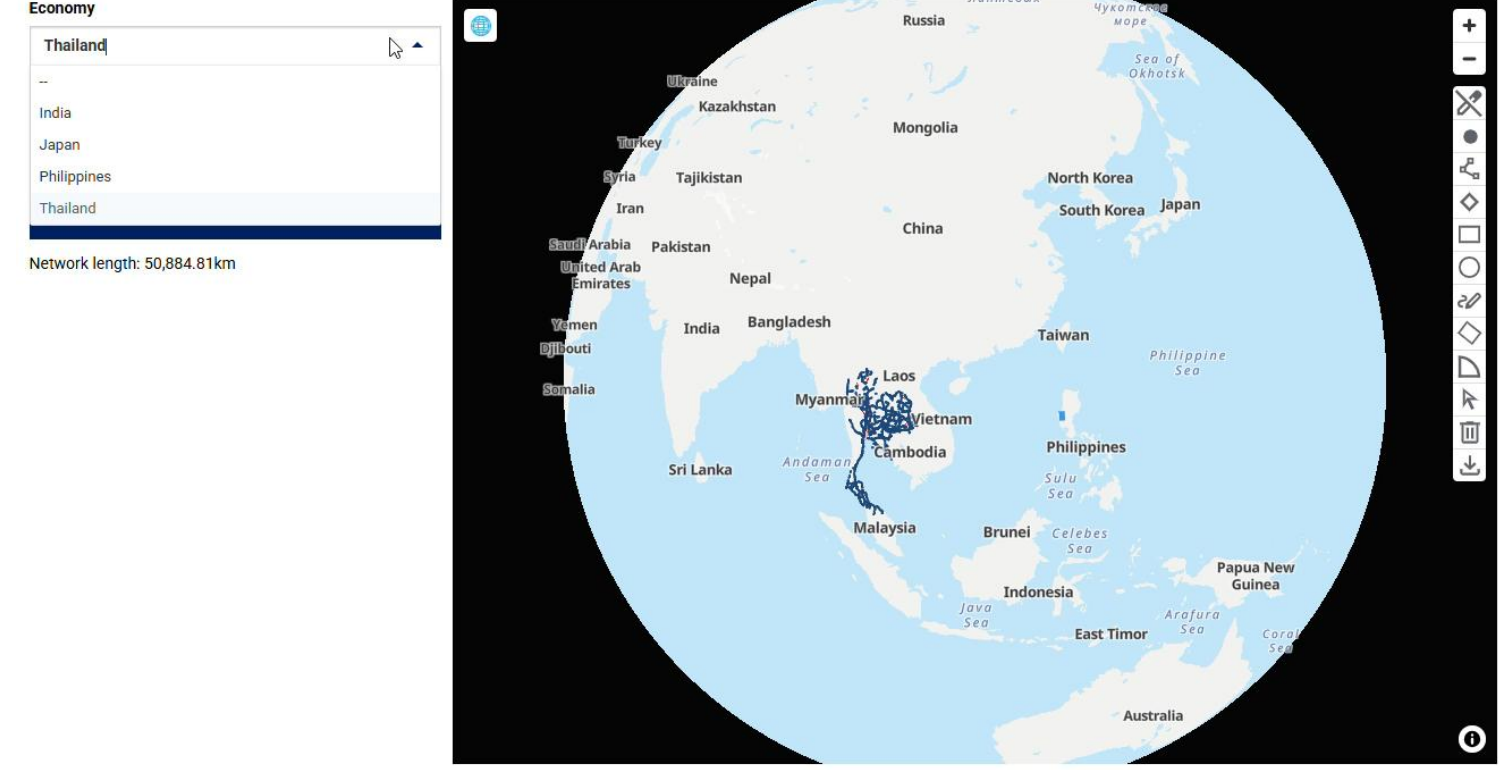


Road Fatalities Visualization Tool
2025-02-13

Each minute, someone dies on Asia's roads, on average. According to the latest available data from WHO, there were over 694 thousand road fatalities in Asia in 2021, almost sixty percent of the total 1.19 million estimated road deaths globally.

[Interactive](#) [Visualization](#)

Tags: road safety, fatalities



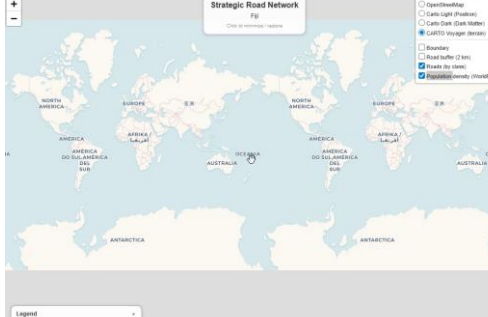
Economy

Thailand

India
Japan
Philippines
Thailand

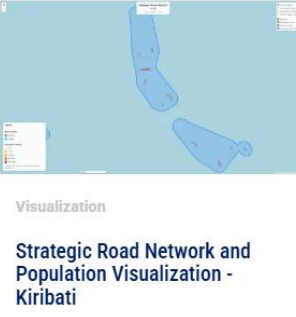
Network length: 50,884.81km

This interactive map displays the economic network for Thailand, showing a network length of 50,884.81km. The map includes labels for various countries in the region such as Russia, Ukraine, Kazakhstan, Mongolia, North Korea, South Korea, Japan, China, Taiwan, Philippines, Malaysia, Brunei, Indonesia, East Timor, Papua New Guinea, and Australia. It also shows major bodies of water like the Sea of Okhotsk, Philippine Sea, Sulu Sea, Celebes Sea, Java Sea, and Arafura Sea. A sidebar on the right contains navigation and interaction tools.



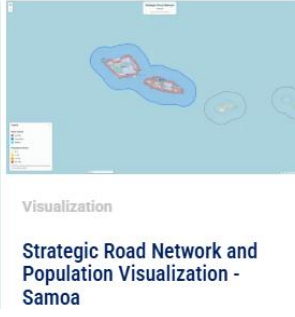
Strategic Road Network
Kiribati

This visualization shows the strategic road network for Kiribati, a small island nation in the Pacific Ocean. The map includes a legend and a scale bar.



Strategic Road Network and Population Visualization - Kiribati

This visualization combines the strategic road network with population density for Kiribati, showing the distribution of roads relative to where people live.



Strategic Road Network and Population Visualization - Samoa

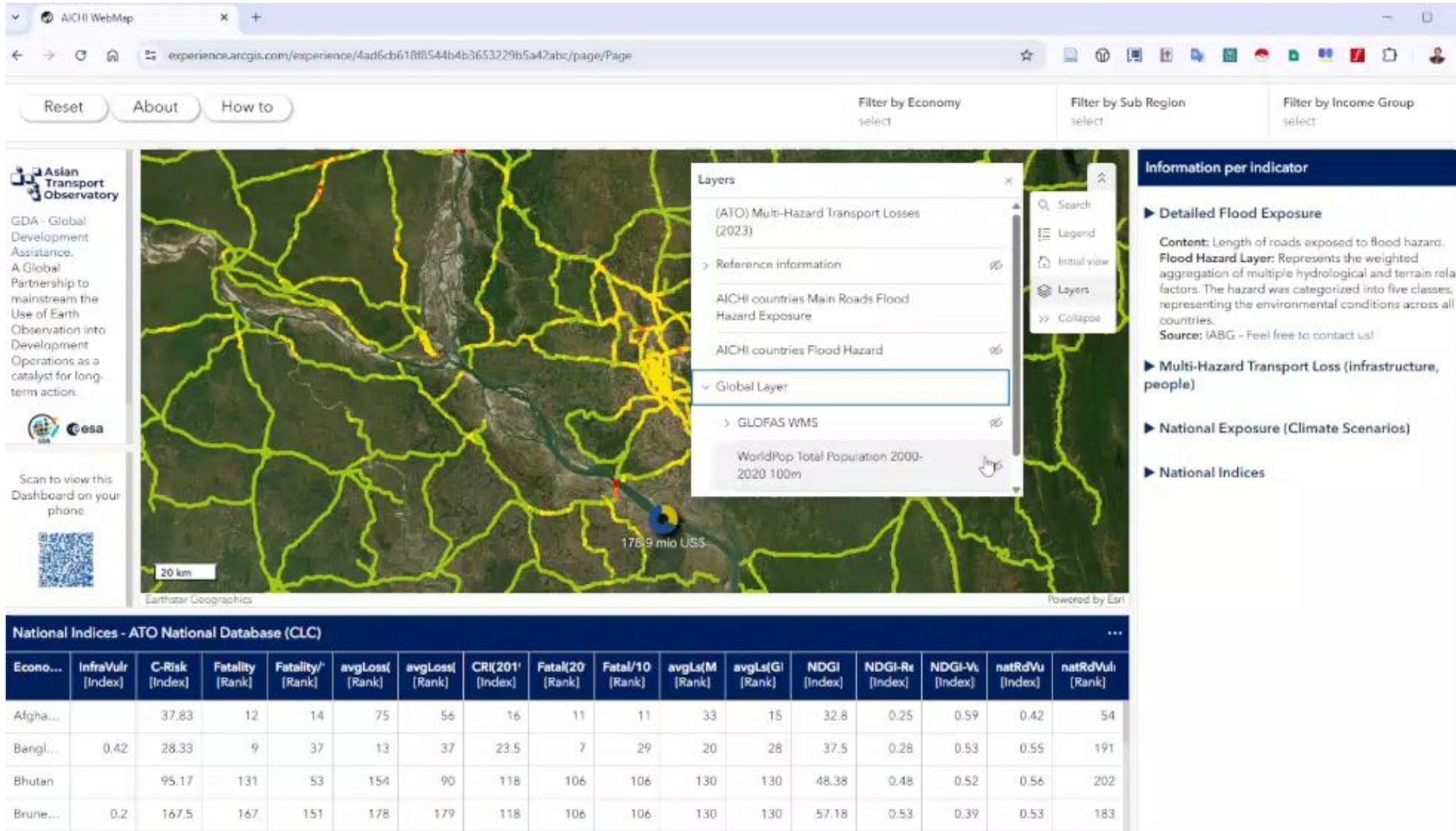
This visualization shows the strategic road network and population density for Samoa, highlighting the connectivity of the island's infrastructure.



Strategic Road Network and Population Visualization - Solomon Islands

This visualization displays the strategic road network and population density for the Solomon Islands, illustrating the geographical spread of roads across the archipelago.

We increase interest and capacity to digest information



asiantransportobservatory.org

“ATO translates data into insights, policies, and investments”

ATO Team	info@asiantransportobservatory.org
Jamie Leather	jleather@adb.org
Andres Pizarro	andres.pizarro@aiib.org
Manuel Benard	manuel.benard@aiib.org
Alvin Mejia	alvinmejia@asiantransportobservatory.org
Sudhir Gota	sudhirgota@asiantransportobservatory.org
Mel Francis Eden	meleden@asiantransportobservatory.org
Adwait Limaye	adwait@asiantransportobservatory.org
Benjamin Soco	benjaminsoco@asiantransportobservatory.org