

Sustainable and Inclusive Urban Transport – Solomon Islands

Alvin Mejia

Co-Team Lead

Asian Transport Observatory

Moving Towards Efficient, Resilient, Low Carbon and Accessible Port Cities in
Asia-Pacific Small Island Developing States (SIDS) to Achieve Better Transport
Connectivity and Accessibility for All
January 28, 2026



Asian Transport Observatory

Strengthening the knowledge base of transport in Asia-Pacific

A leading platform that gathers and shares comprehensive datasets, generate unique policy insights, and delivers novel knowledge products rooted in groundbreaking analysis.

asiantransportobservatory.org



ATO National Database

Explore over 450 transport indicators from 51 economies divided across nine categories



ATO National Transport Policy Documents Database

Explore close to 1100 transport policy documents in Asia and the Pacific



ATO Urban Database

Explore more than 260 urban level transport indicators across nine categories



ATO Cost Database

Explore more than 1,300 transport-related projects and benchmark their costs within subregions or income groups in Asia and the Pacific



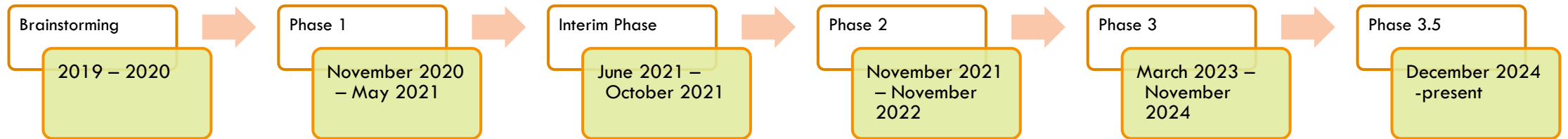
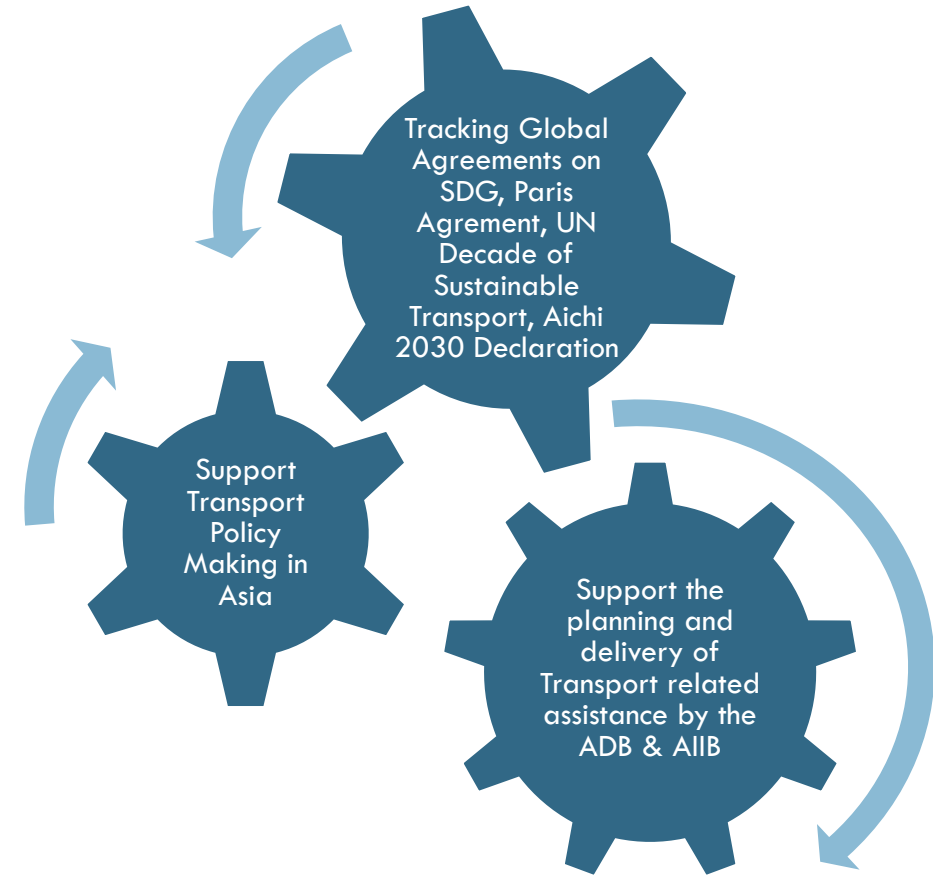
ATO Analytical Outputs

Read about analysis made using ATO transport data and policy information

Asian Transport Observatory (ATO)

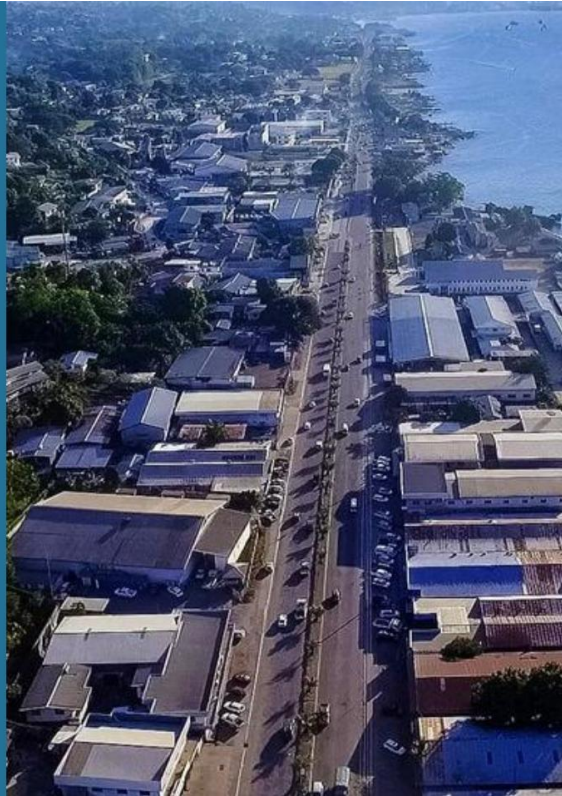
A Catalyst for Sustainable Transport in Asia

- 52** Economies (ADB Members + Russia and Iran)
- 460** Urban Centers (412 Asia-Pacific, 48 International)
- 51** Urban Centers with a detailed data
- 700** Indicators
- 430k** Data points
- 1.2k** Policy documents

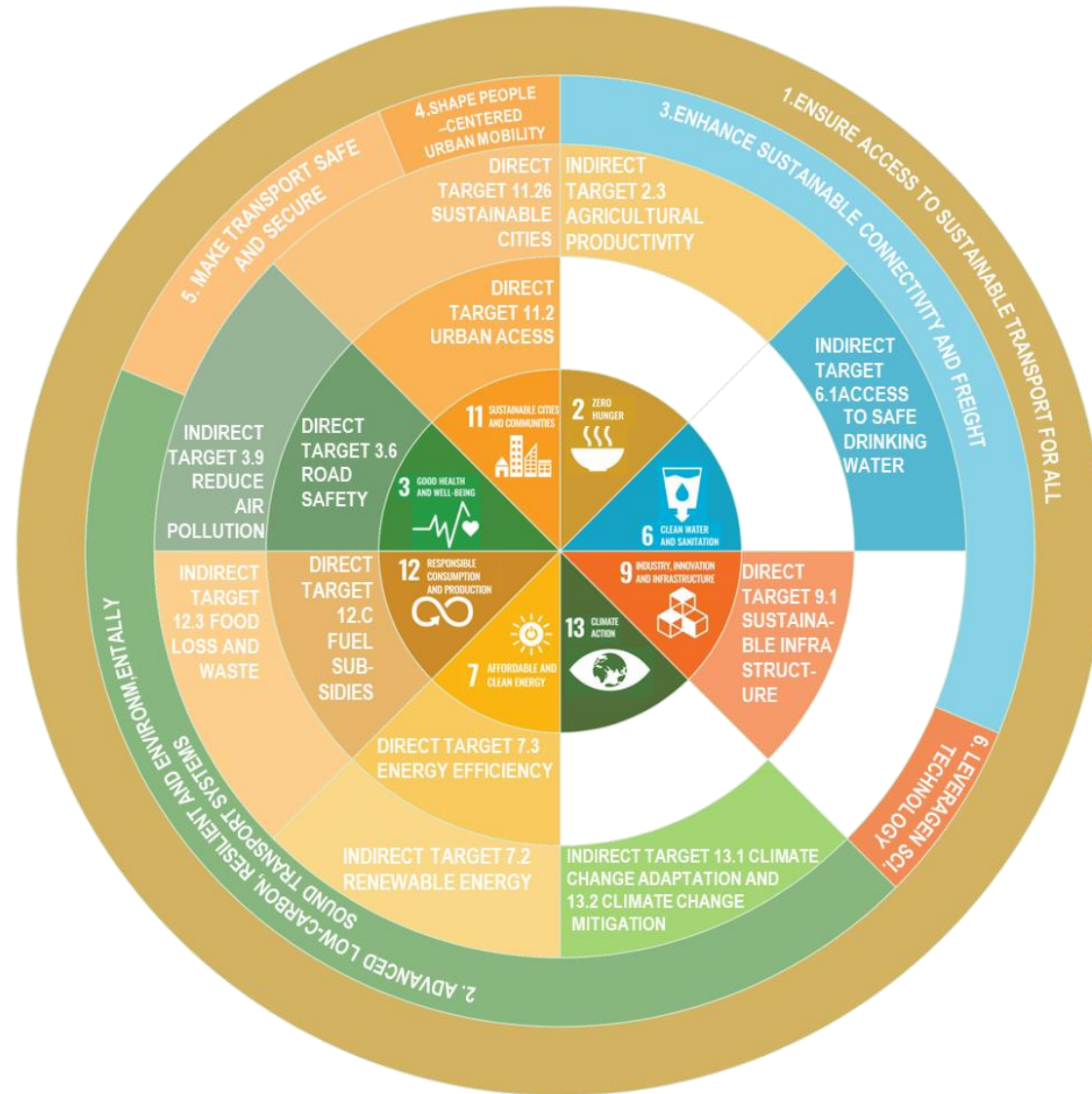


Transport in Review
Working Paper Series

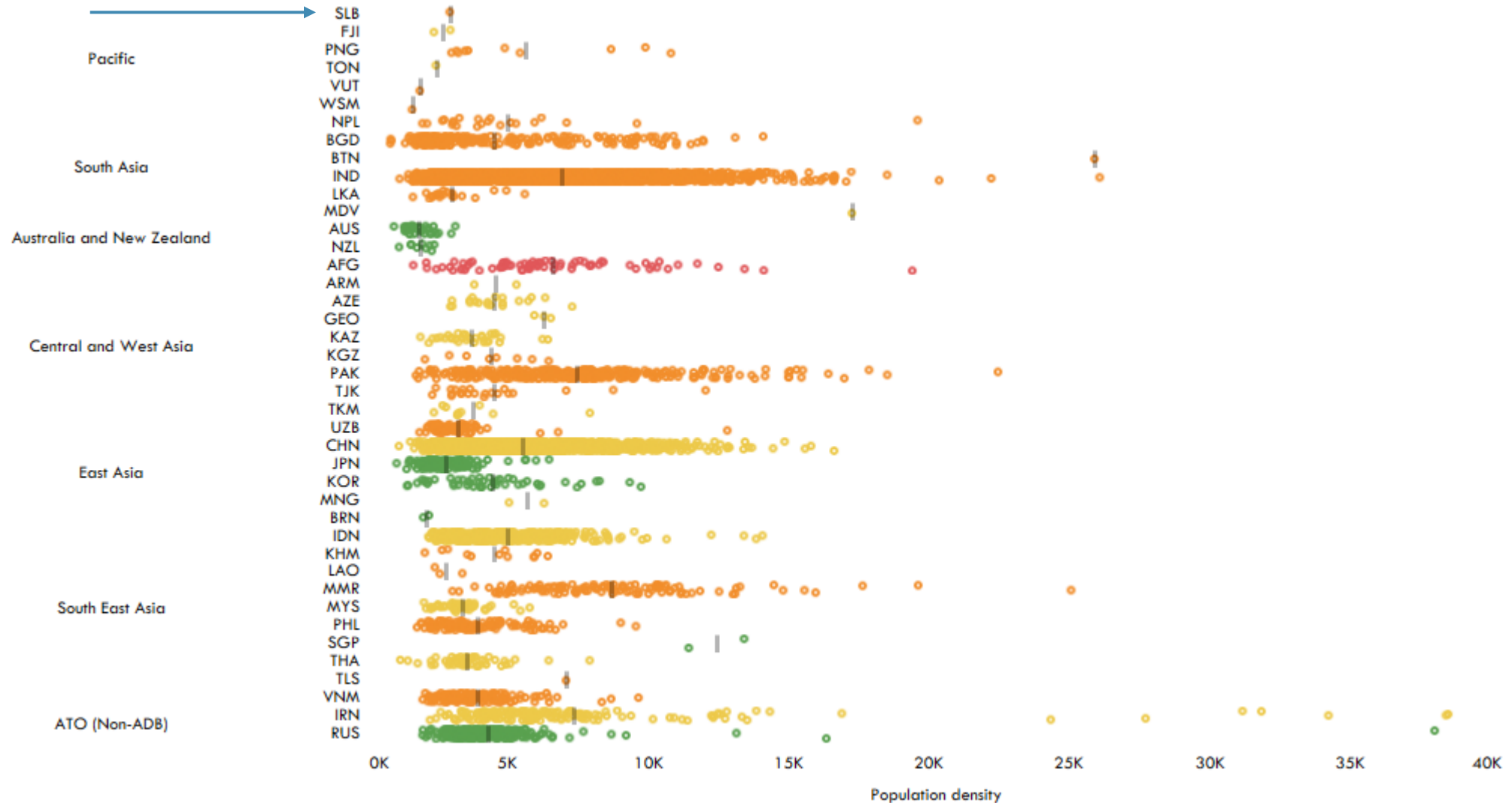
SOLOMON ISLANDS



[https://asiantransportobservatory.org/
analytical-outputs/transport-in-
review/solomon-islands-2026/](https://asiantransportobservatory.org/analytical-outputs/transport-in-review/solomon-islands-2026/)

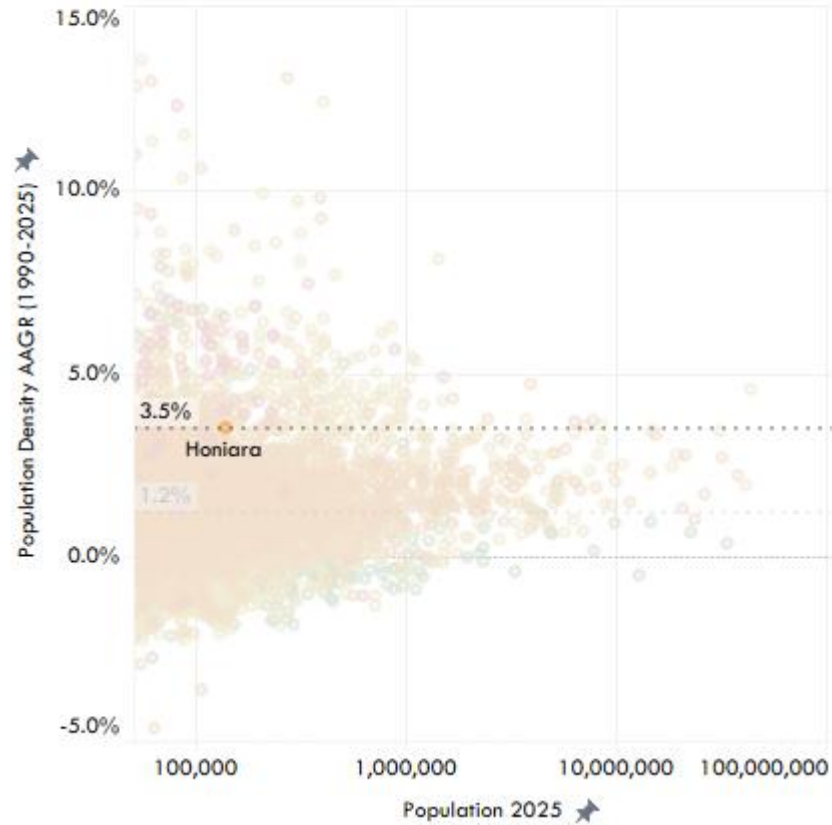


Urban Population Densities

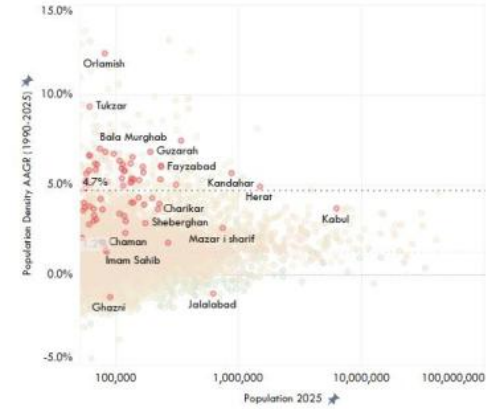


Urban Population – Rates of Change

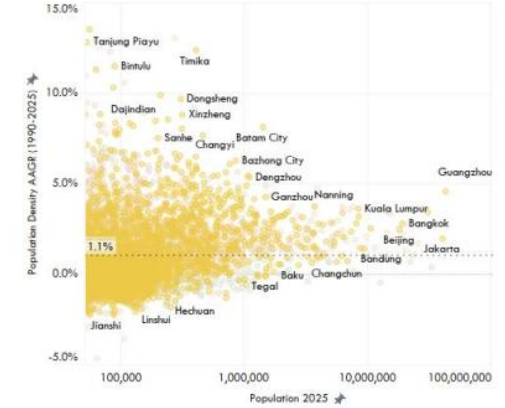
Asia-Pacific Population 2025 and AAGR
Population Density 1990-2025



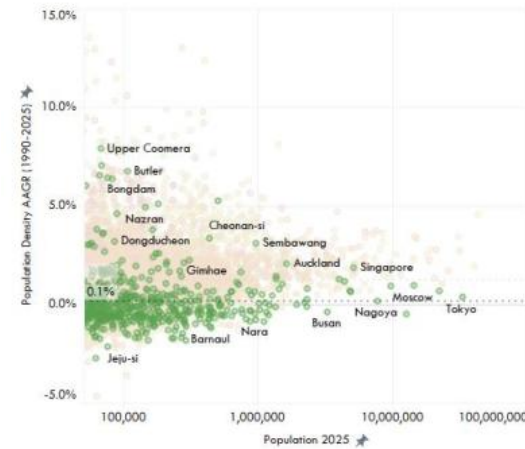
Lower Middle Income



Low Income



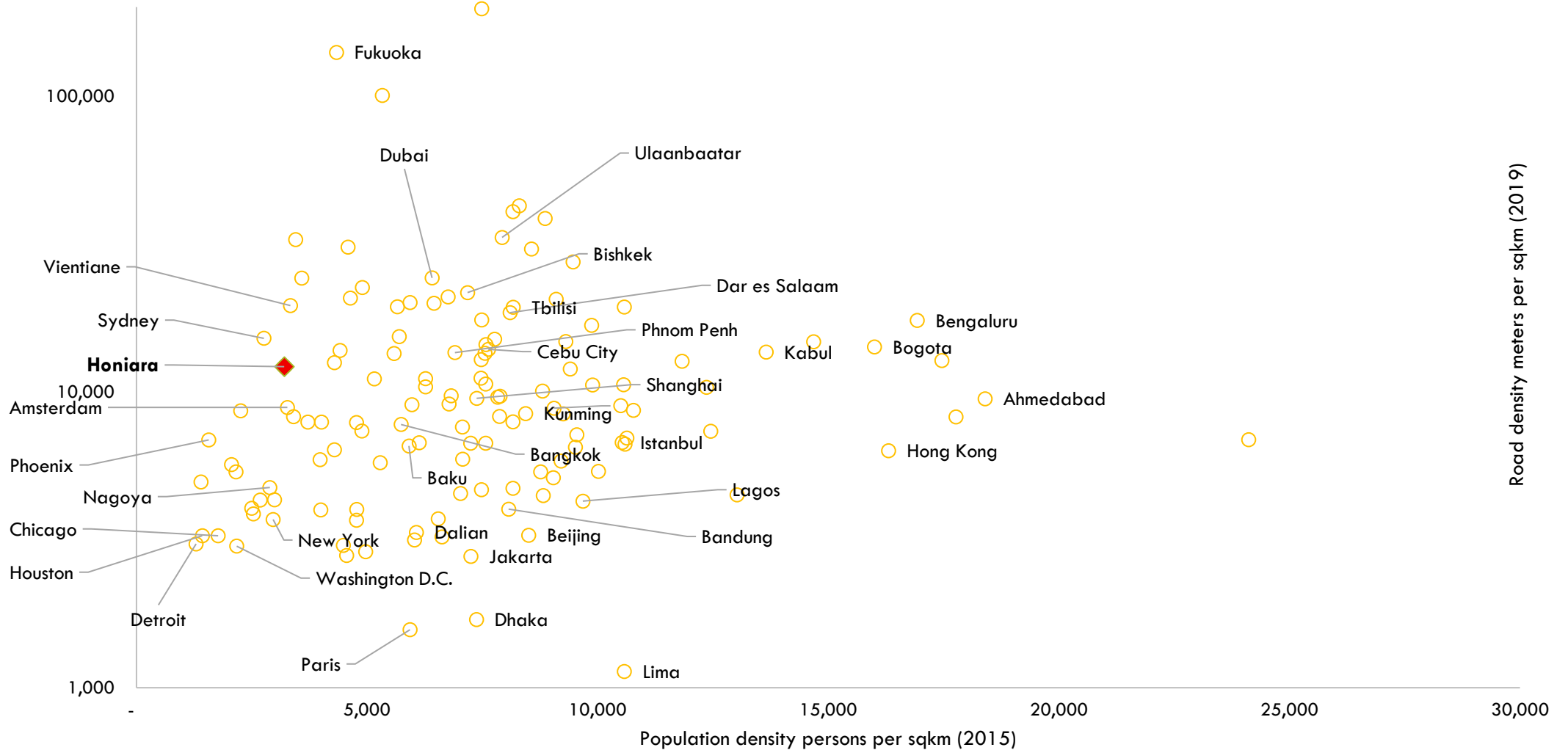
Upper middle income



High Income

- Low income
- Lower middle income
- Upper middle income
- High income

Road Infrastructure Density



AUTONOMOUS
REGION OF
BOUGAINVILLE

Solomon
Sea

HONIARA

SOLOMON
ISLANDS

Road classes

- primary
- secondary
- tertiary

200 km

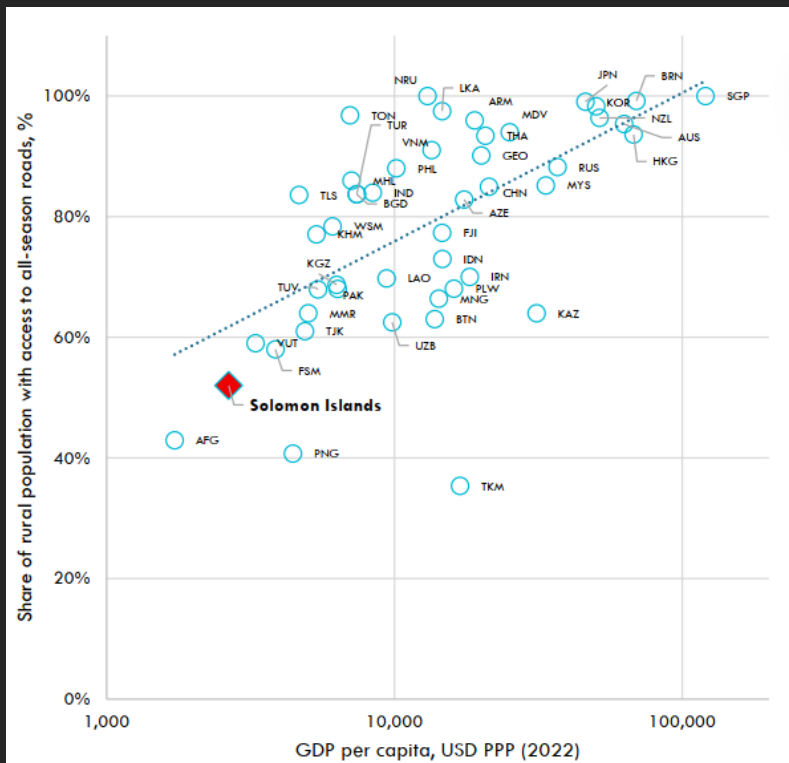
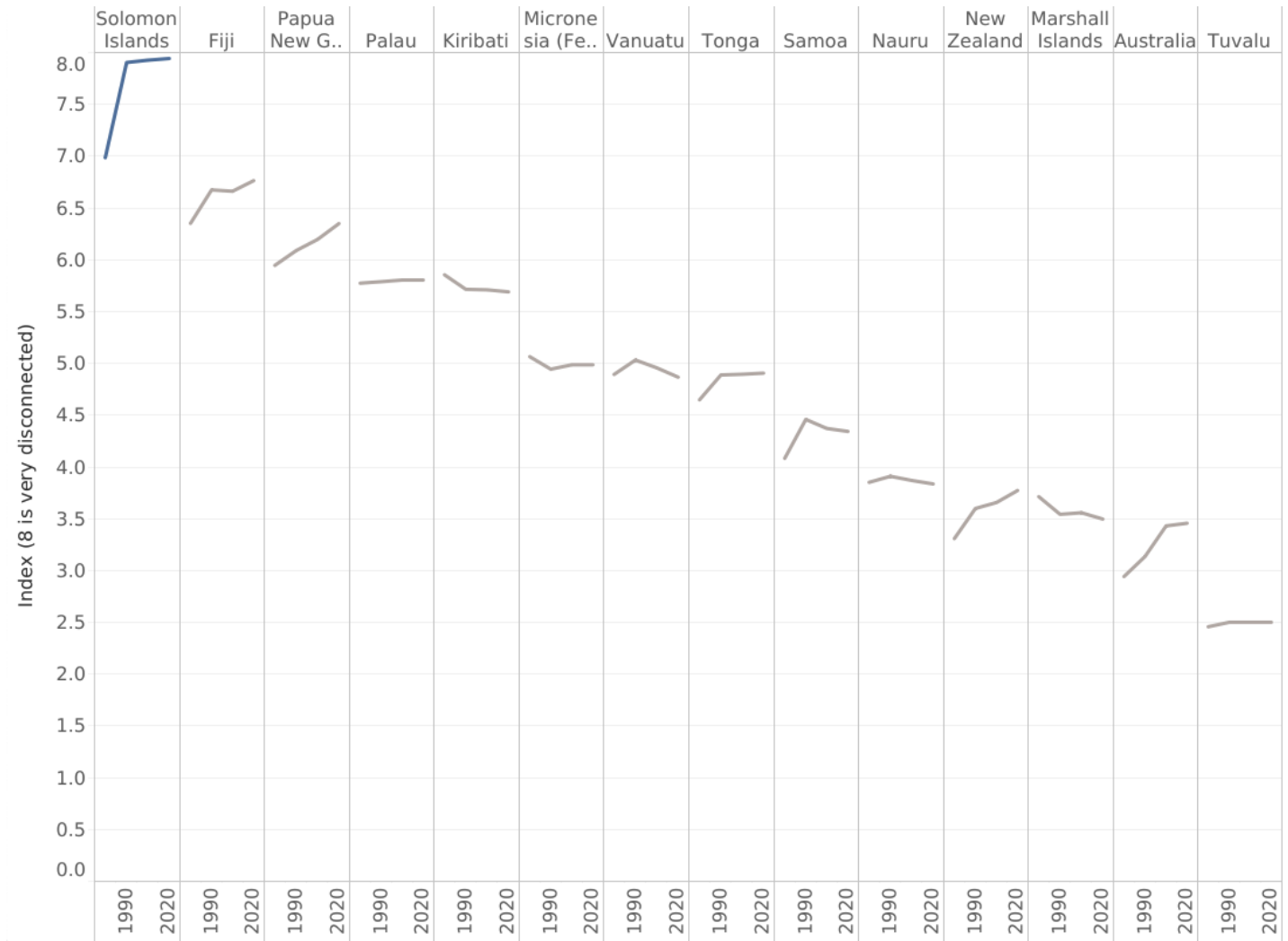


Figure 13. Rural Access Index vs. GDP per Capita (2022)

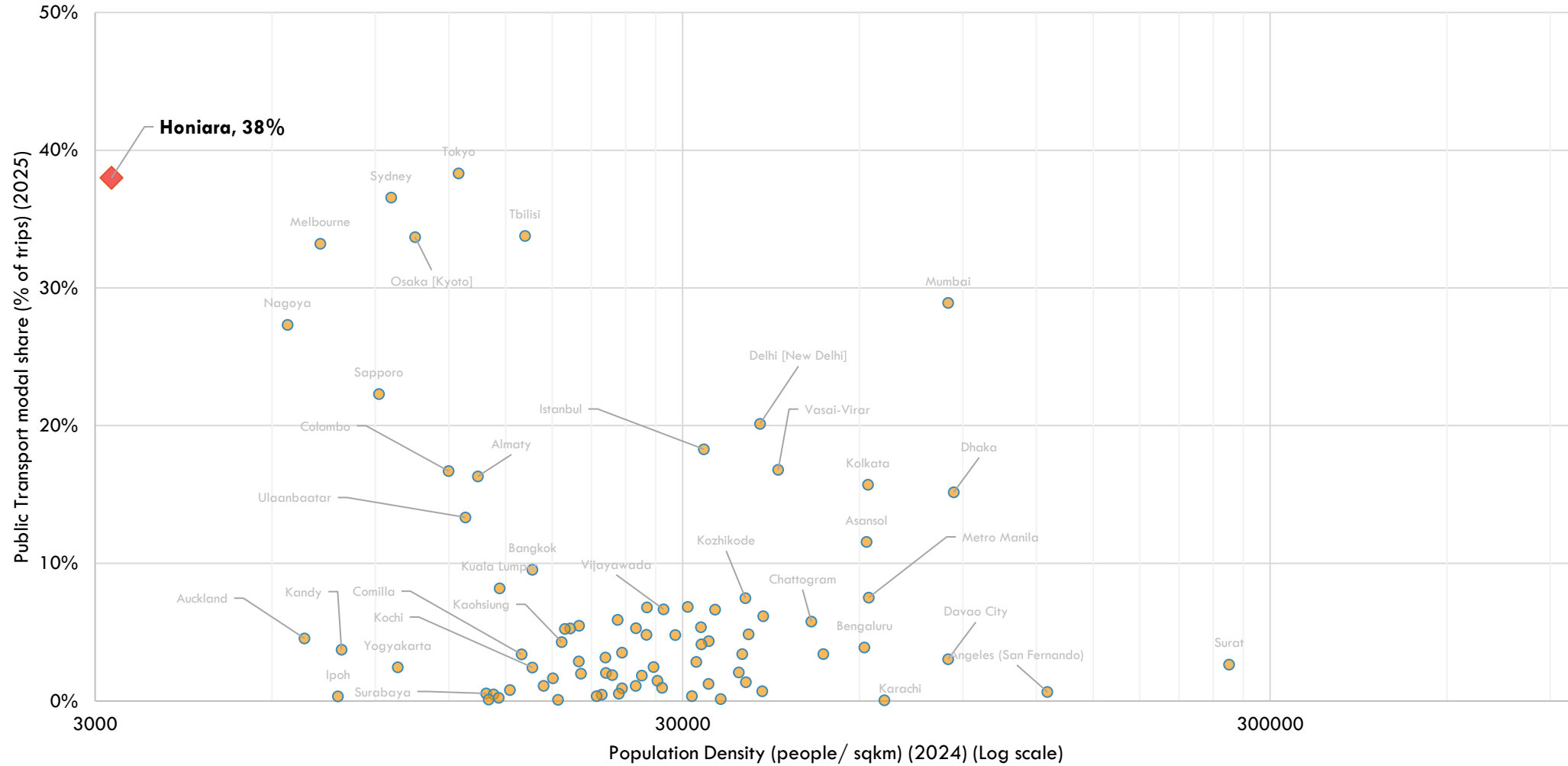
Source: ATO analysis and visualization based on: (Center for International Earth Science Information Network 2023; SDSN 2025; World Bank 2023)

Street Network Disconnectivity Index

- The Street-Network Disconnectivity Index (SNDi) measures this comparatively across urban areas, evaluating connectivity based on nodal degree, dead ends, circuitry, and sinuosity (Barrington-Leigh and Millard-Ball 2025).
- A higher SNDi signifies greater sprawl and less connectivity.

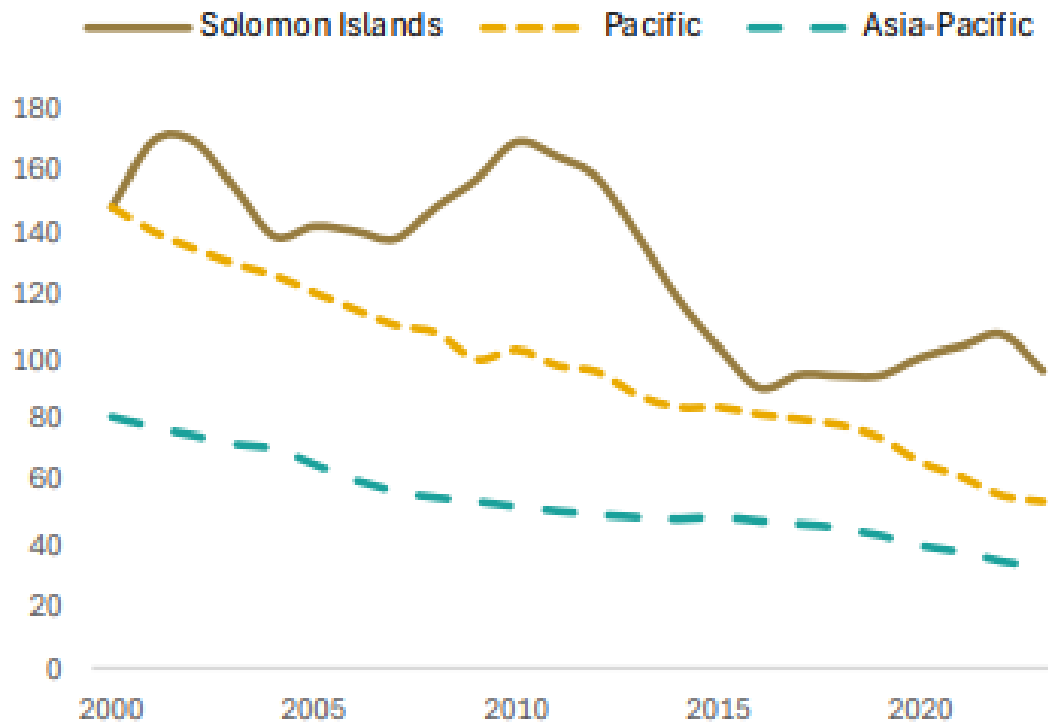


Public Transport Mode Share

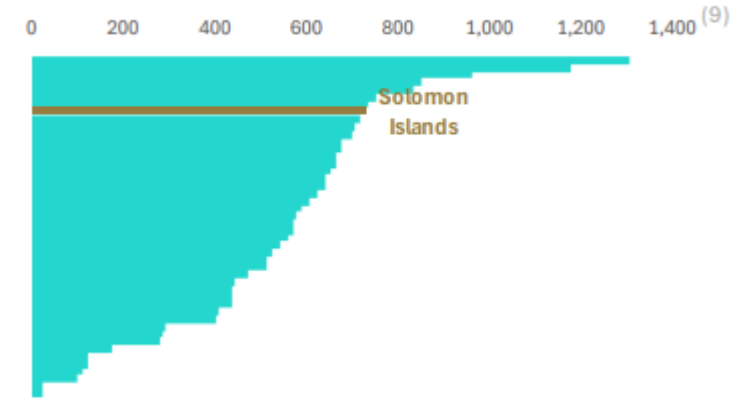


Transport GHG Emissions

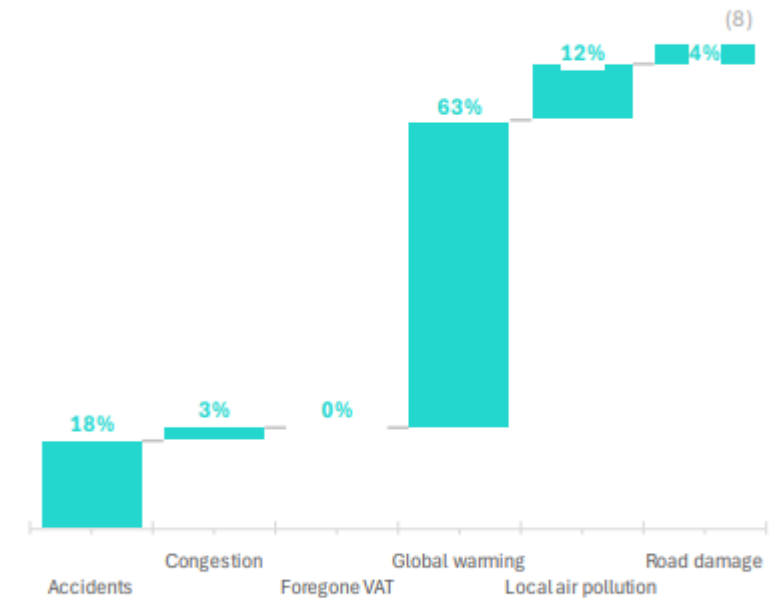
Transport CO2 emissions intensity trend, gCO2 per USD



Grid emission factors in Asia-Pacific, gCO2 per kWh

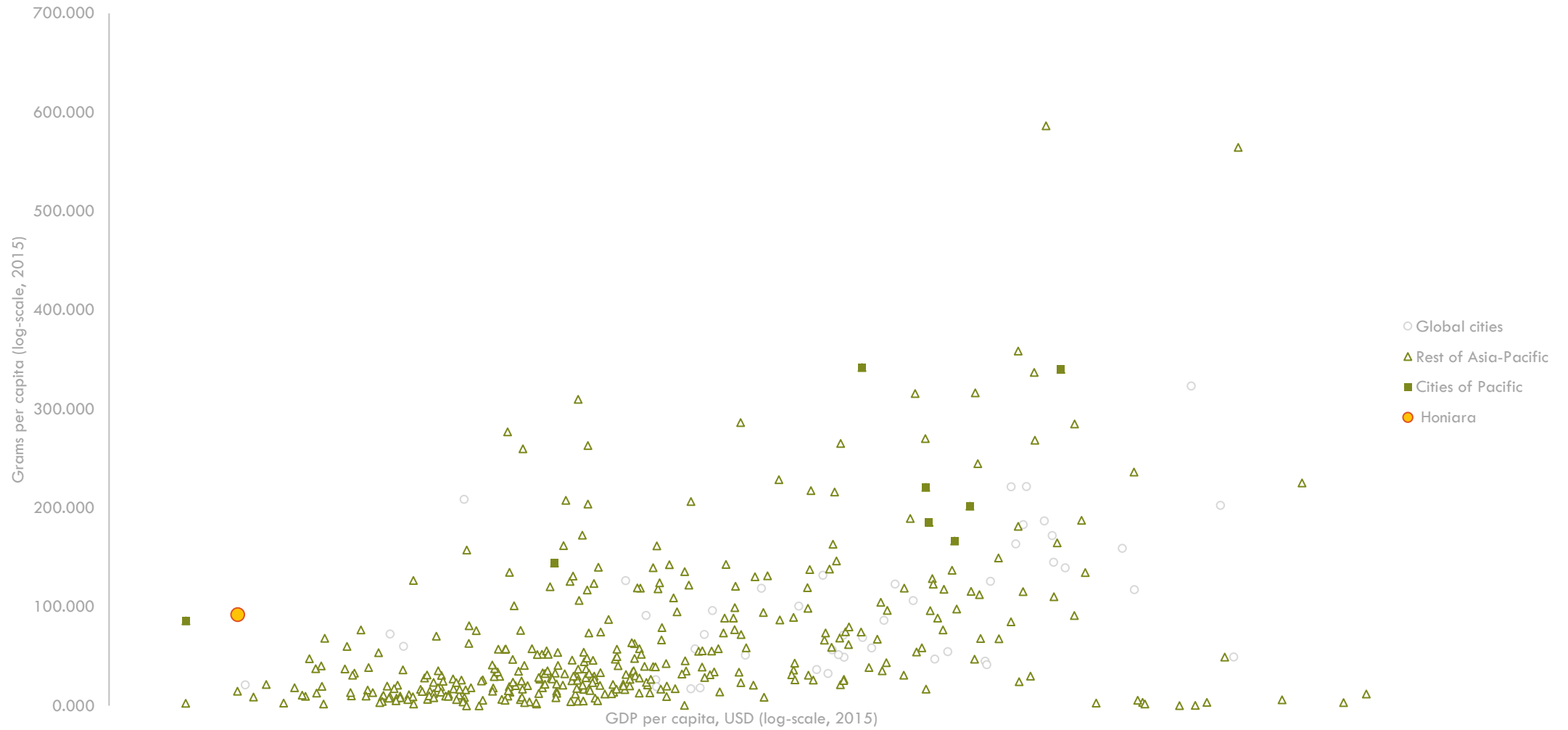


Estimated externalities due to fossil fuel subsidies



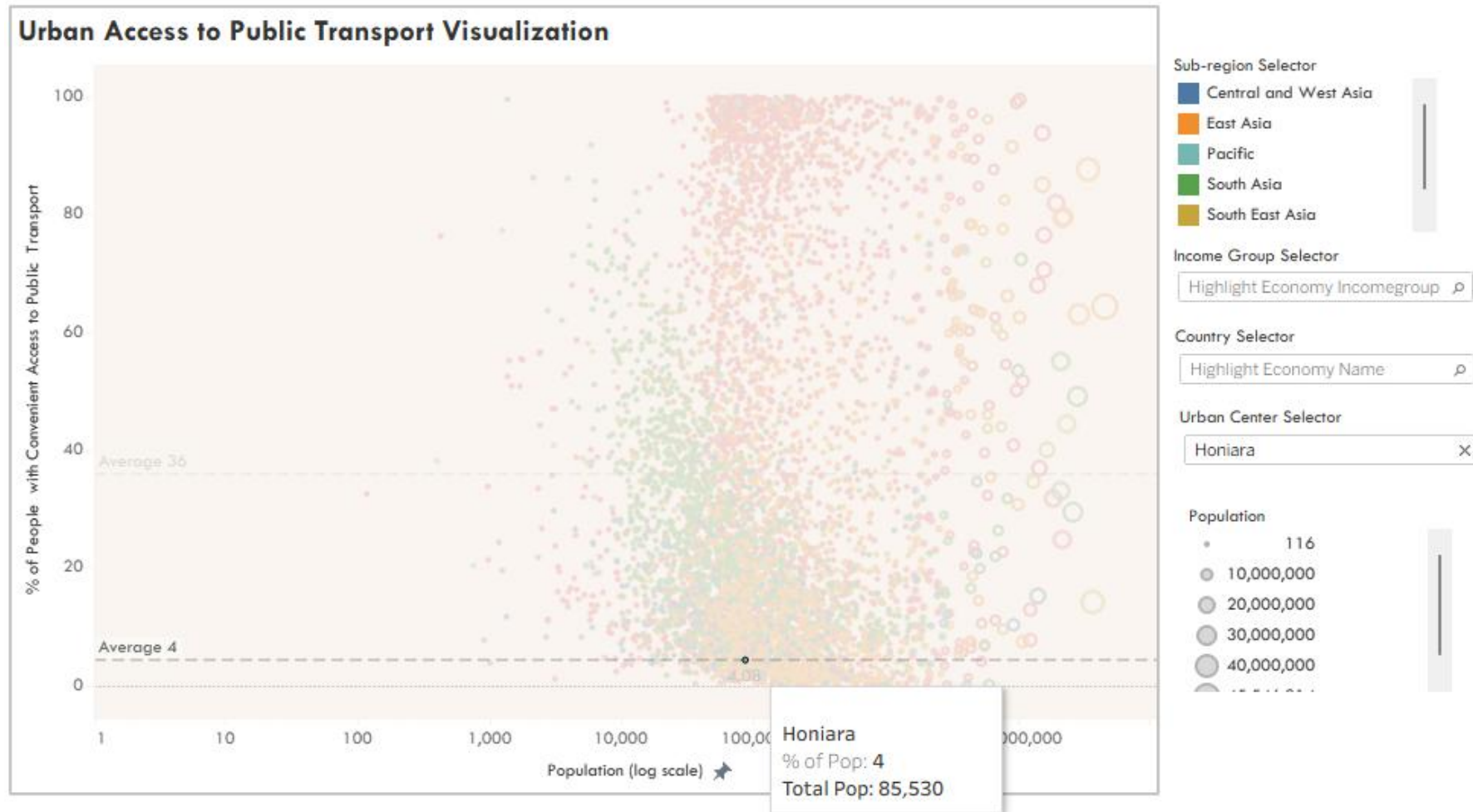
Data includes all sectors and all fuel types

Transport PM 2.5 emissions



Access to Public Transport

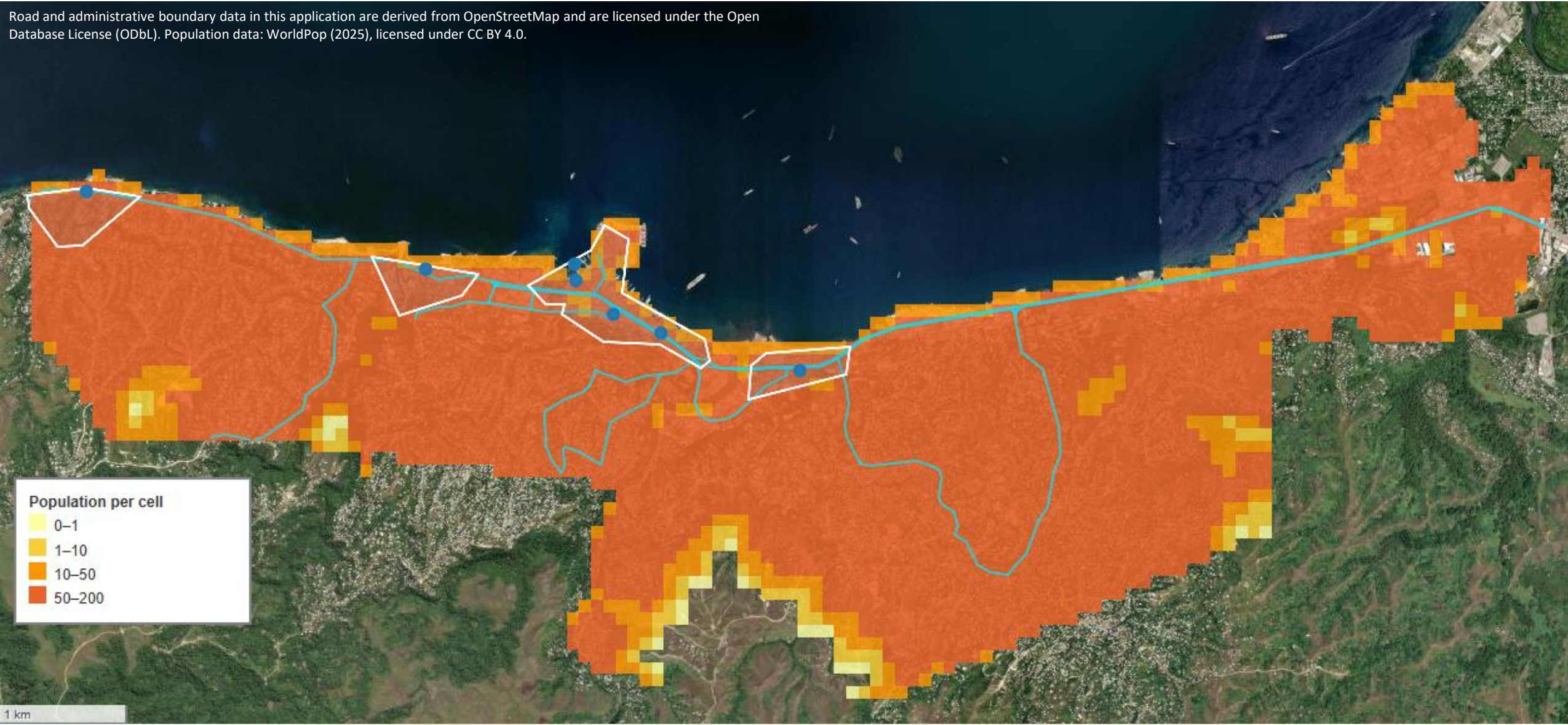
Distribution of Urban Centers based on Population % with Convenient Access to Public Transport



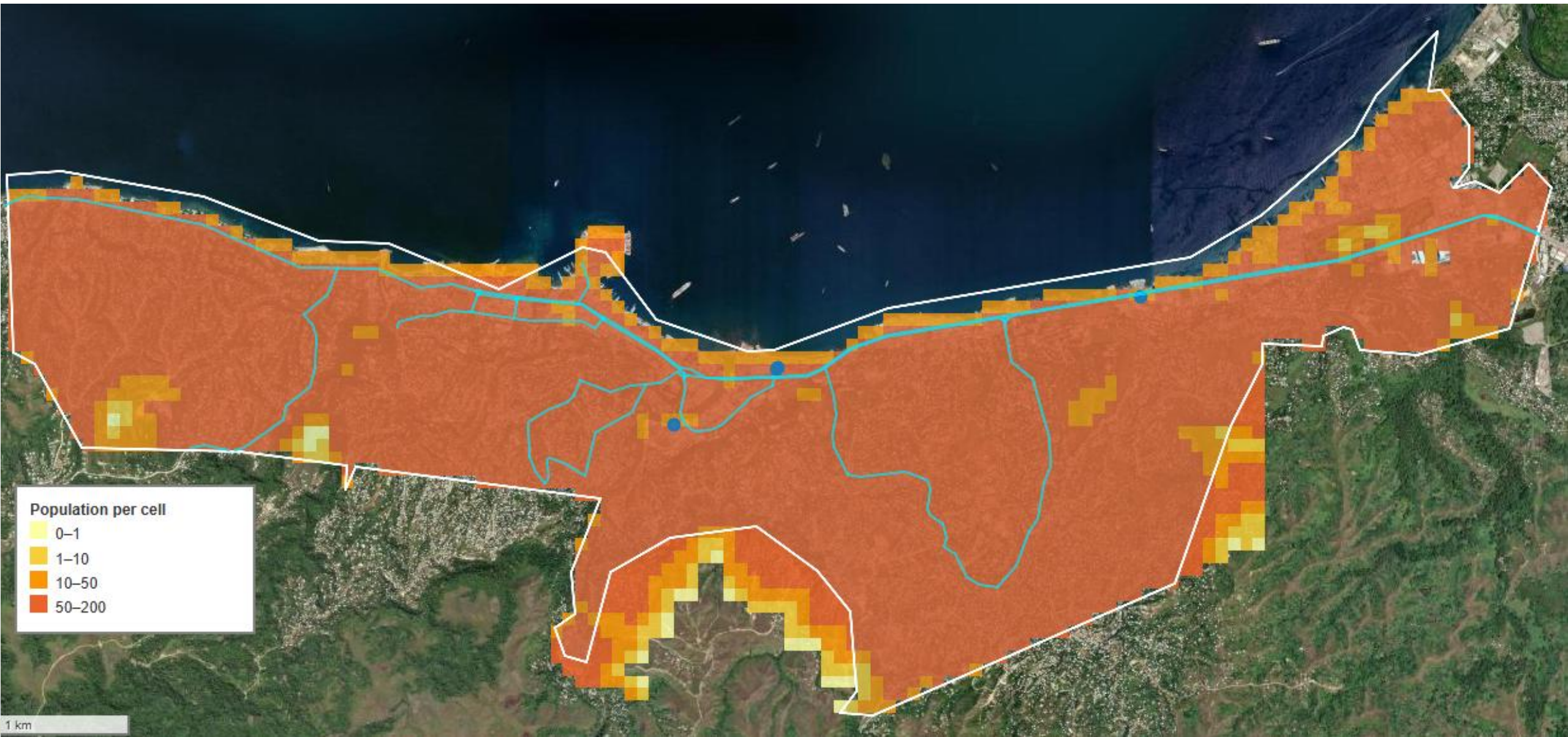
ATO visualization based on Center for International Earth Science Information Network - CIESIN - Columbia University. 2023. SDG Indicator 11.2.1: Urban Access to Public Transport, 2023 Release. Palisades, New York: NASA Socioeconomic Data and Applications Center (SEDAC). <https://doi.org/10.7927/1a5z-3h71>.

Honiara – 5 Minute Walking to Public Transport Stations

Road and administrative boundary data in this application are derived from OpenStreetMap and are licensed under the Open Database License (ODbL). Population data: WorldPop (2025), licensed under CC BY 4.0.



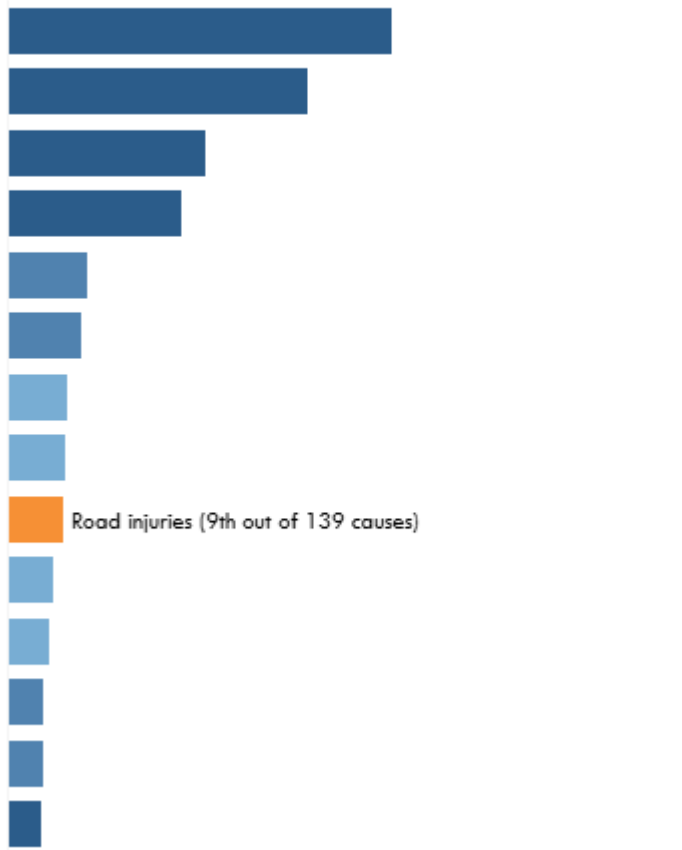
Honiara – 30 minute driving to medical facilities



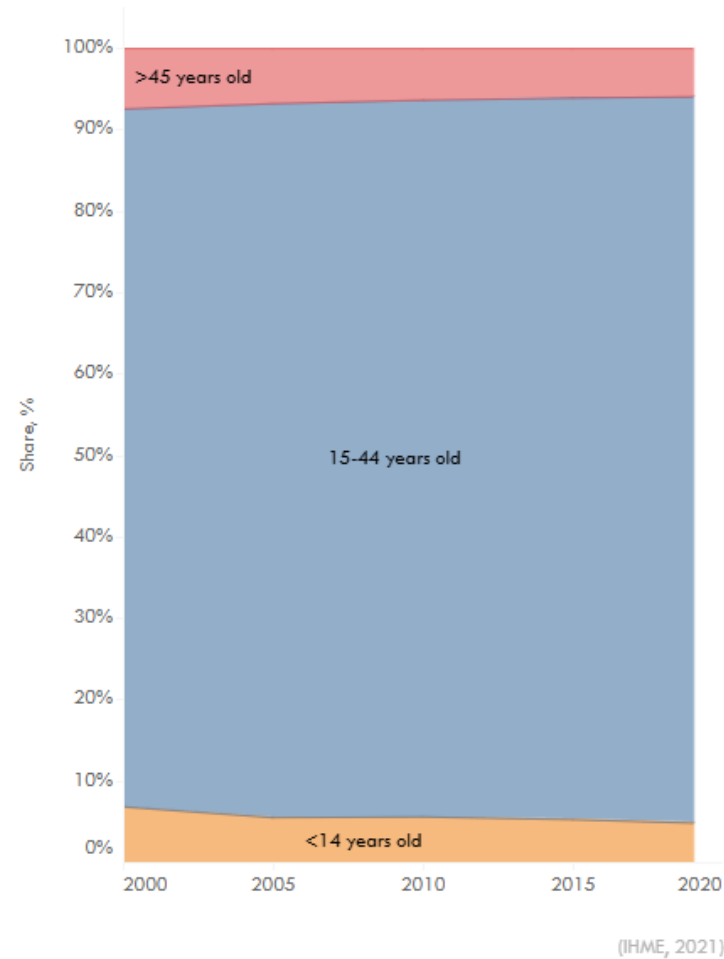
Road Safety Indicators

Road crash fatality rate for Year 2021
16.6 per 100,000 population

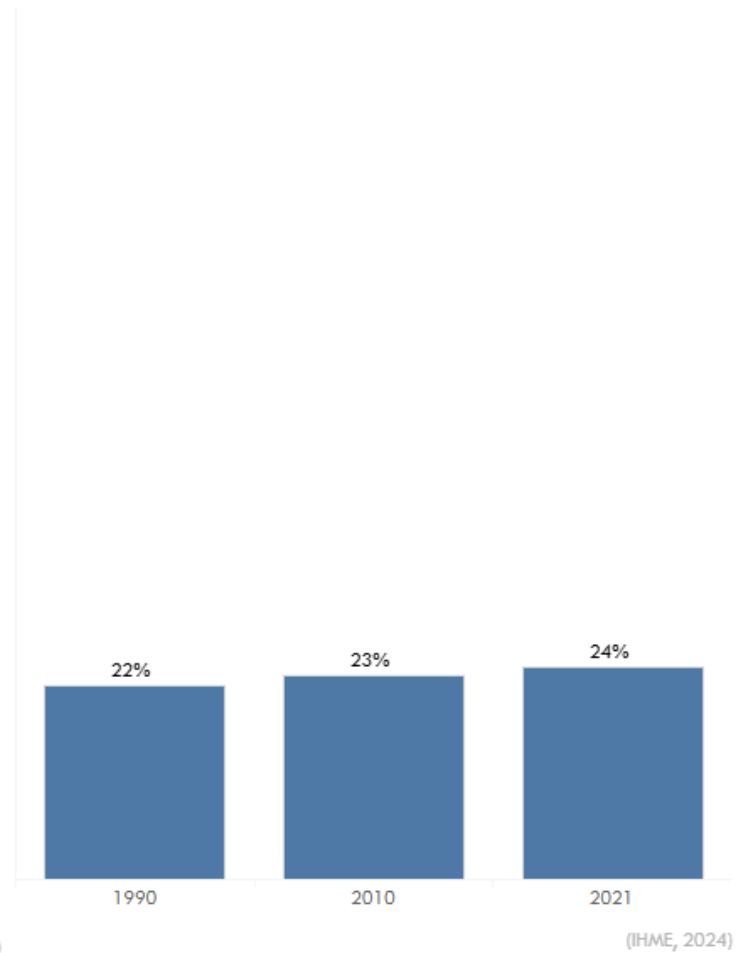
Causes of mortalities in Solomon Islands (2021)



Road crash fatalities, share by age group



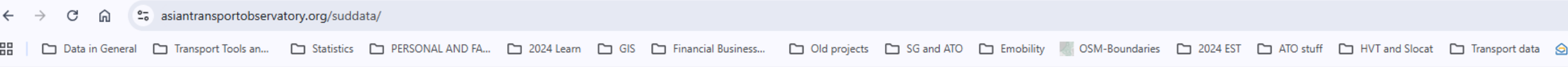
Share of female road crash fatalities



Policy Highlights on Urban Access - PICs



https://asiantransportobservatory.org/



- Home
- Databases ▾
- Analytical Outputs ▾
- Insights
- Updates
- About ▾

▶ How to extract ATO Urban Data

▼ Urban centers

Count 0 / 1 ✖



Select All 1 ✓ | Reset ✕

Papua New Guinea ▶ ?

▶ Indicators ?

Count 0 / 233 ✖

▶ Time

Count 0 / 36 ✖

ATO Urban Database

Download formatted data

Indicator view

Each page is a table for **one indicator across multiple urban centers**. This is best for side-by-side data comparison between urban centers.

Urban center view

Each page is a table for **one urban center with multiple indicators**. This is best for an overview of various indicators of one urban center.



Download raw data

This is best for further analysis using third-party software like Excel.



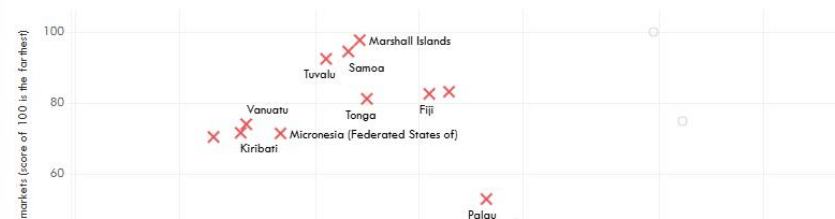
<https://asiantransportobservatory.org/pacific/>

Pacific Transport Observatory

REMOTENESS INDEX

Geographical distance from markets

Pacific Island countries are situated farthest away from economic centers, translating to increased transportation costs, hindering trade, and eventually crippling economic performance. Other factors such as integration into transport networks, political and cultural linkages, and the quality of digital connectivity further aggravate the challenge of isolation.



AVERAGE ANNUAL LOSS

Expected losses on transport infrastructure due to natural hazards

Pacific Island countries' transport infrastructure is sparse but hold disproportionately high economic value. It underpins domestic activity, services, tourism, and trade. It also represents a substantial share in national capital stock and public investment. Exposure of transport infrastructure to natural hazards in the subregion is estimated to reach 10-60 million USD per year.



Developed with the support of

ATO Knowledge Products



SDG Profiles
(39 countries)

Transport Climate Profiles
(24 countries)

Road Safety Profiles
(24 countries)

E-mobility Profiles
(10 countries)

Green Roads Profiles
(23 countries)

Gender Profiles
Rail Profiles
(20 countries)
(4 countries)

ATO Insights: Interactive visualisations



Climate Financing: Transport Sector in Asia - Visualization

2024-11-26

The dashboard presents a detailed overview of climate finance flows specific to regional trends, funding distribution, and sources of investment.

Interactive Visualization

Tags: Climate, Climate finance



Liner Connectivity Index - Visualization

2024-11-08

The Liner Shipping Bilateral Connectivity Index (LSBCI) provides a comprehensive measure between pairs of countries, capturing their level of integration into global liner shipping.

Interactive Visualization

Tags: connectivity, Sustainable Transport, Maritime Transport, Global Trade, Supply chain



Transport CO2 Emissions Visualization Tool

2024-11-18

ATO has created a visualization / animation tool using the data from IEA-EDG. Data from 1990 onwards is represented in the visualization tool which aims at magnitude, direction, and speed of change in transport-sector emissions, ...

Interactive Visualization

Tags: emissions



Renewable Energy Share in Electricity Generation - Visualization

2024-10-30

The renewable energy (RE) share in electricity generation (%) refers to the proportion of renewable sources such as wind, solar, hydro, and geothermal.

Interactive Visualization

Tags: energy, e-mobility, electrification



Urban Access to Public Transport - Visualization

2024-10-24

Access to public transport plays a critical role in creating inclusive cities. Access to Public Transport—focuses on how well urban residents have access to public transport, social equity, environmental sustainability, and economic opportunities.

Interactive Visualization

Tags: urban access, cities, public transport, urban centers



Transport CO2 Intensity of the Economy

2024-10-15

Interactive Visualization

Tags:

Summary

- Urbanization continue to increase in pace for Solomon Islands, more so than other countries in the Pacific sub-region
- Infrastructure provision and maintenance within the main urban areas, careful planning for other growth areas important
- Same goes with public transport infrastructure and services
- Environmental externalities due to increased transport activity, and slow transition towards e-mobility (transport and energy) need to be taken into consideration
- Other factors also important in terms of ensuring access to sustainable urban transport
- Open data, though limited, particularly in the case of the PICs, can still be useful in forming strategic insights

asiantransportobservatory.org

“ATO translates data into insights, policies, and investments”

| | |
|-------------------------|--|
| ATO Team | info@asiantransportobservatory.org |
| Jamie Leather | jleather@adb.org |
| Andres Pizarro | andres.pizarro@aiib.org |
| Manuel Benard | manuel.benard@aiib.org |
| Alvin Mejia | alvinmejia@asiantransportobservatory.org |
| Sudhir Gota | sudhirgota@asiantransportobservatory.org |
| Mel Francis Eden | meleden@asiantransportobservatory.org |
| Adwait Limaye | adwait@asiantransportobservatory.org |
| Benjamin Soco | benjaminsoco@asiantransportobservatory.org |

Check out the ATO Profiles!



Transport Sector Profiles



Transport and Climate Profiles



E-mobility Profiles



Urban transport Profiles



Green Roads Profiles



Rail sector Profiles



Road Safety Profiles



Gender in mobility Profiles