

Moving Towards the UN Decade of Sustainable Transport

Insights on Progress Tracking

Alvin Mejia

Co-Team Lead

Asian Transport Observatory

July 2, 2025



Asian Transport Observatory (ATO)

A Catalyst for Sustainable Transport in Asia



52 Economies (ADB Members + Russia and Iran)

460 Urban Centers (412 Asia-Pacific, 48 International)

47 Urban Centers with a detailed review * To be increased to 50

- Caters to various stakeholder groups
- Flexible approach towards indicator inclusion
- Multi-scalar data
- Wide range of indicator sources
- Includes policies and measures
- Includes relevant sectors outside transport



ATO National Database

Explore over 450 transport indicators from 51 economies divided across nine categories



ATO National Transport Policy Documents Database

Explore close to 1100 transport policy documents in Asia and the Pacific



ATO Urban Database

Explore more than 260 urban level transport indicators across nine categories



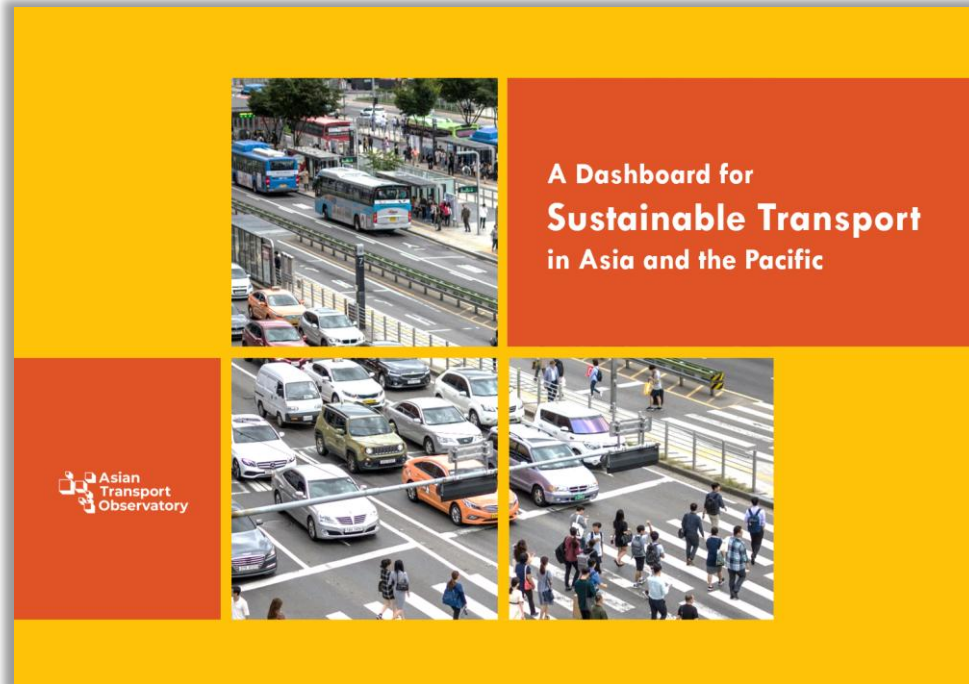
ATO Cost Database

Explore more than 1,300 transport-related projects and benchmark their costs within subregions or income groups in Asia and the Pacific



ATO Analytical Outputs

Read about analysis made using ATO transport data and policy information



This report tracks measurable progress in sustainable transport across the region, benchmarking it against global trends. It provides a critical foundation for advancing the 2030 SDG Agenda and the upcoming UN Decade of Sustainable Transport (2026-2035)



Towards Effective Monitoring for the UN Decade of Sustainable Transport

Holger Dalkmann*, James Leather, Sudhir Gota, Alvin Meija

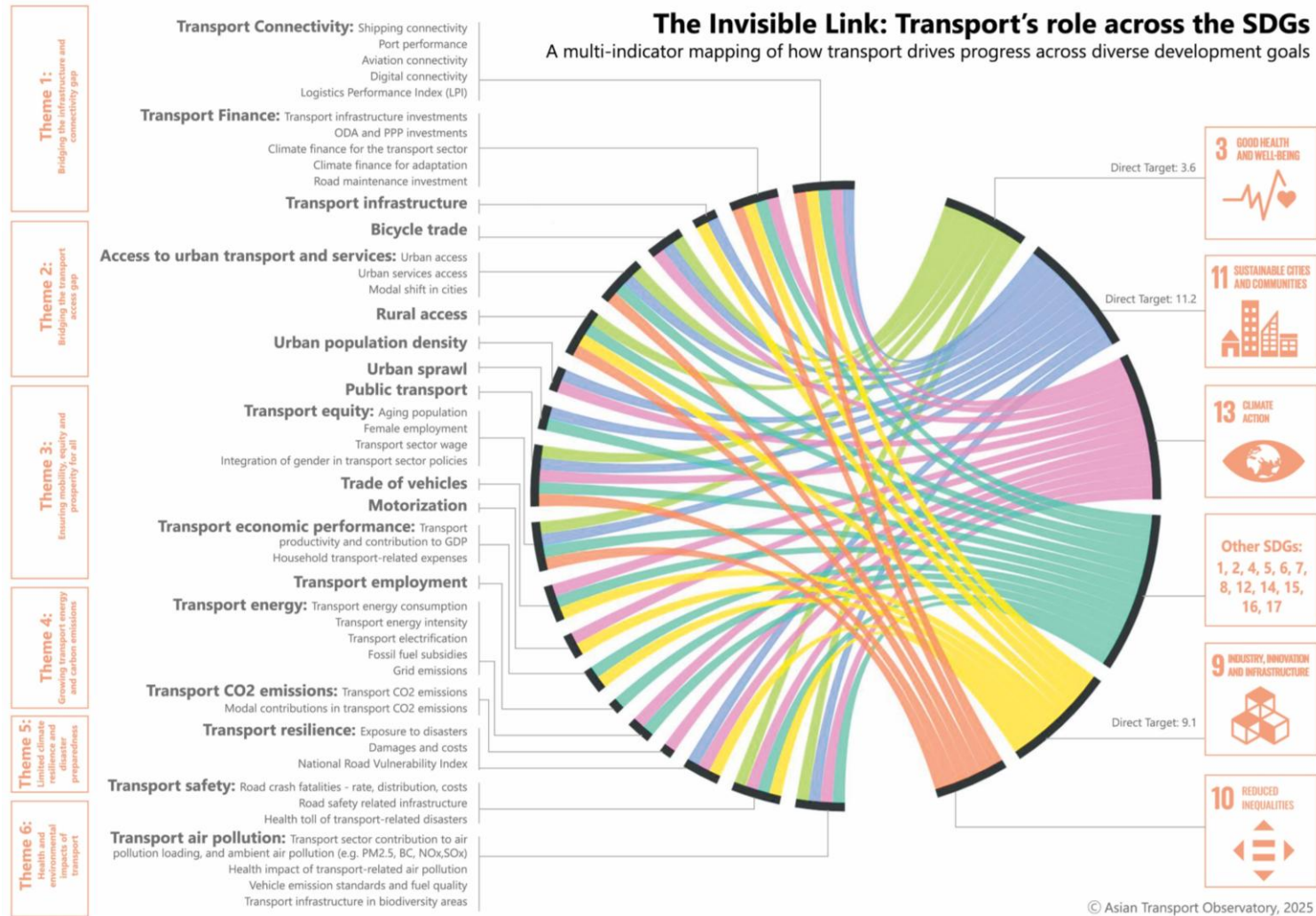
Draft for Distribution to the participants of UN workshop on Sustainable Transport
23 - 24 June 2025 in Geneva

*Corresponding Author: Holger Dalkmann, Sustain 2030/ADB Consultant – hdalkmann@sustain2030.net

The paper outlines key considerations for designing a future monitoring framework for the UN Decade of Sustainable Transport, drawing from past UN Decades, regional initiatives and ongoing data initiatives

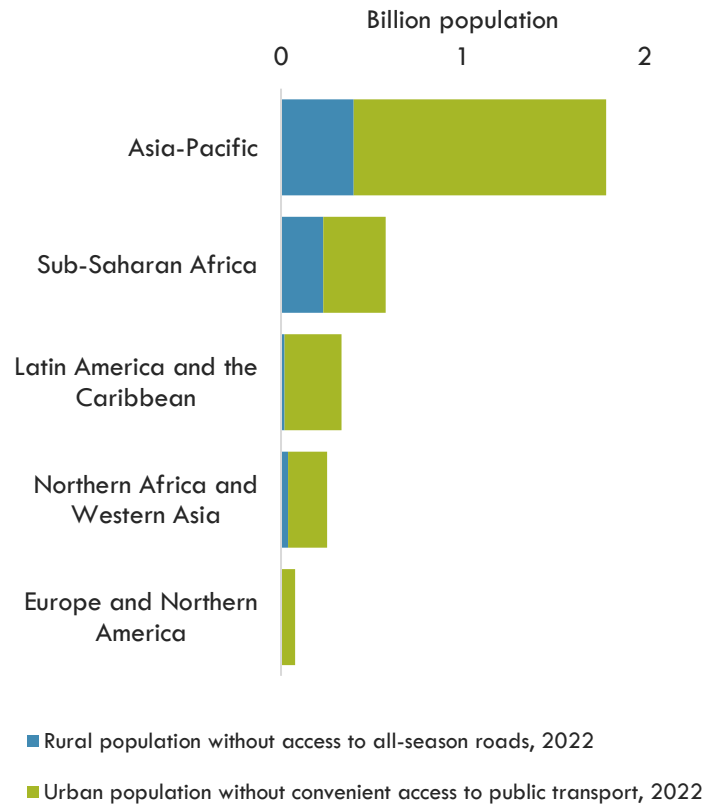


Transport as a Red Thread

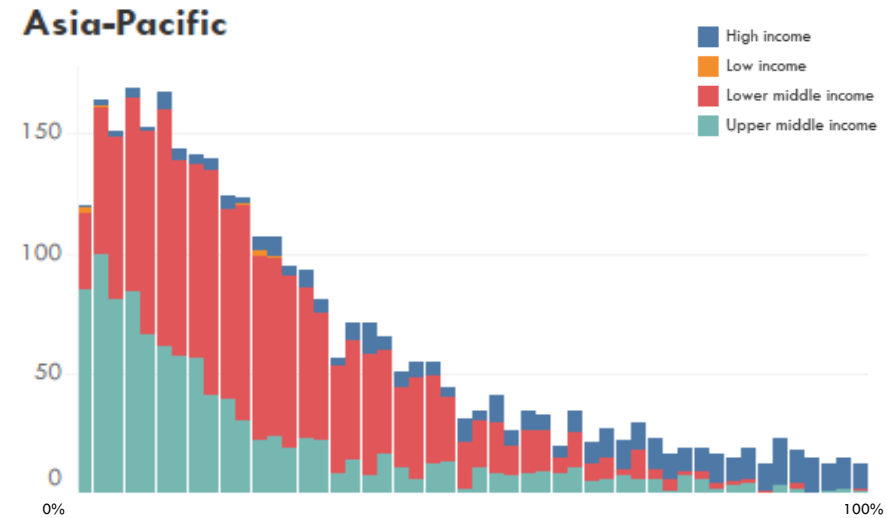


1. Ensuring Access

Population Without Proper Access – Rural Roads and Urban Public Transport

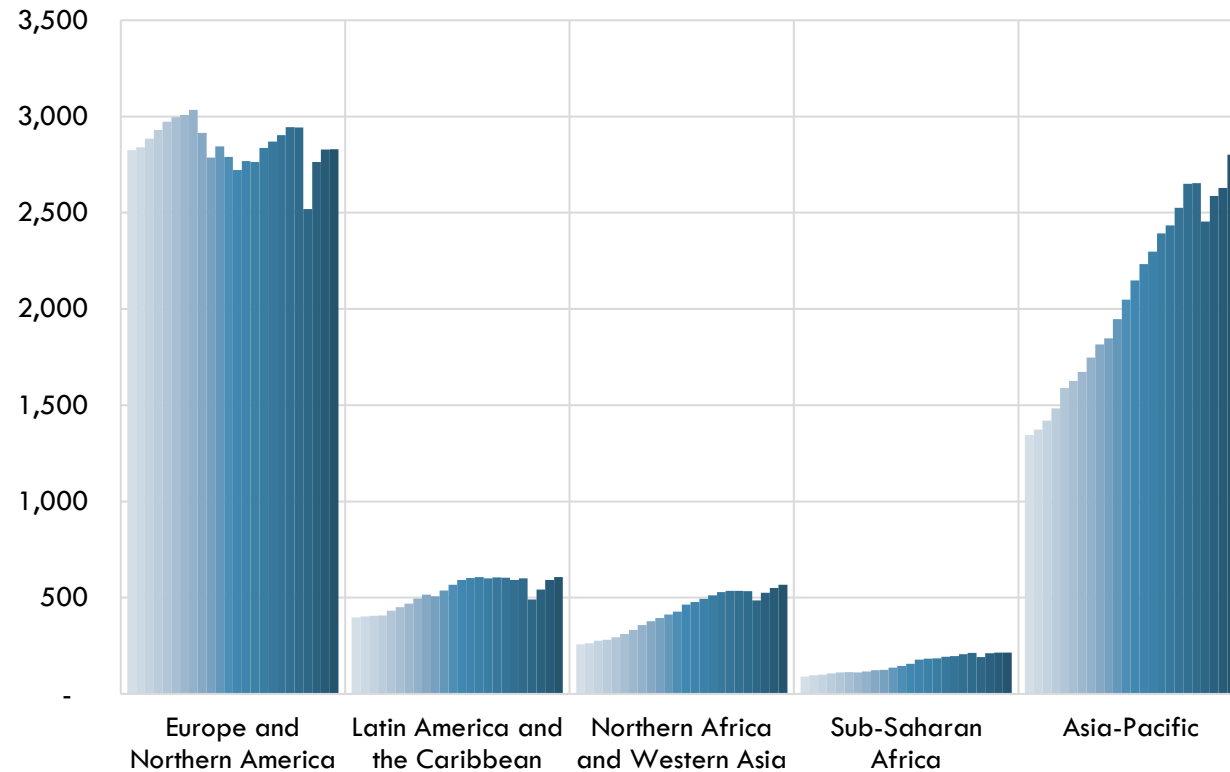


Distribution of Cities
(% Population with Convenient Access to Urban Public Transport)



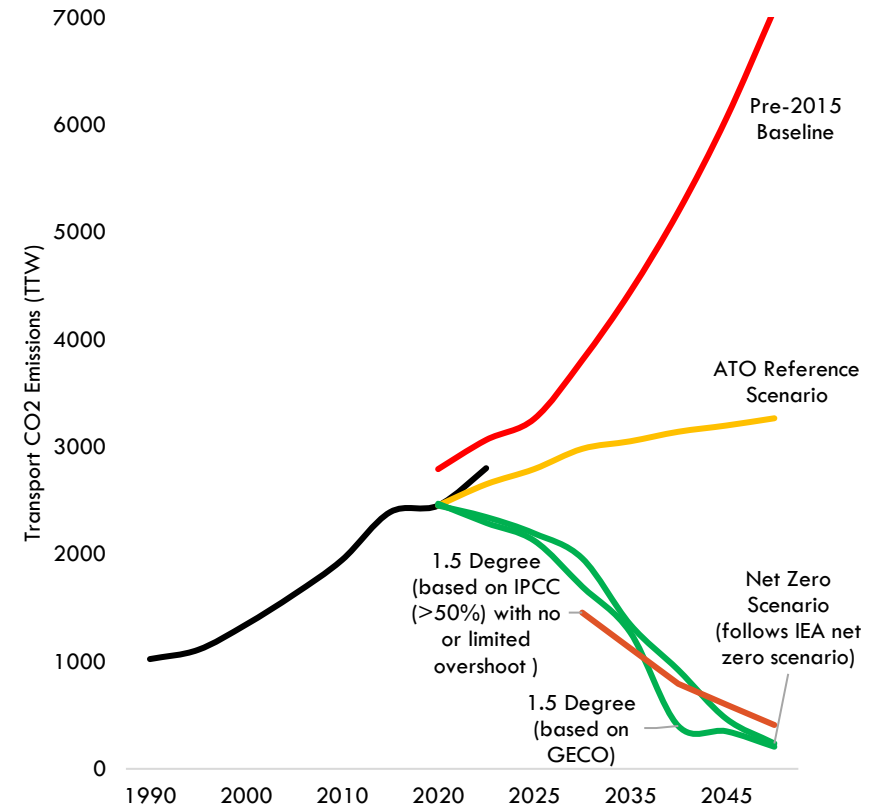
2. Decarbonizing Transport

Domestic Transport CO2 Emissions, 2000-2023, Million Tonnes of CO2 Emissions



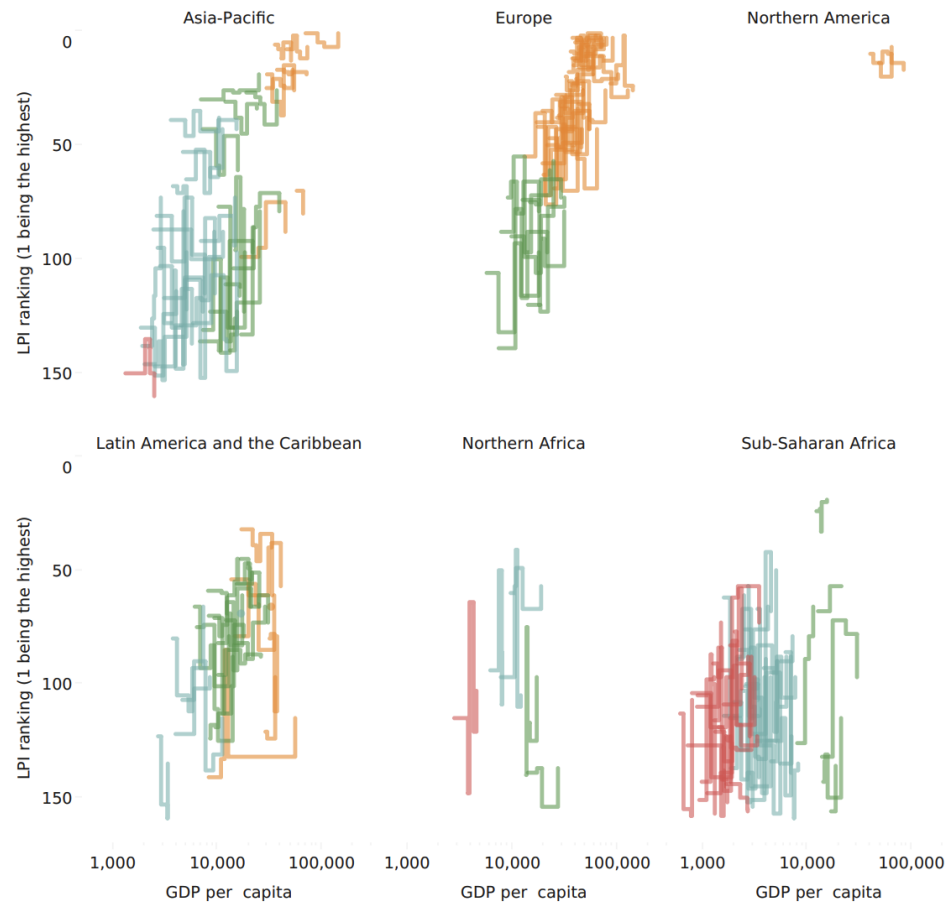
Source: ATO visualization based on data from Crippa et al. (2023)

Transport CO2 Emissions in Asia



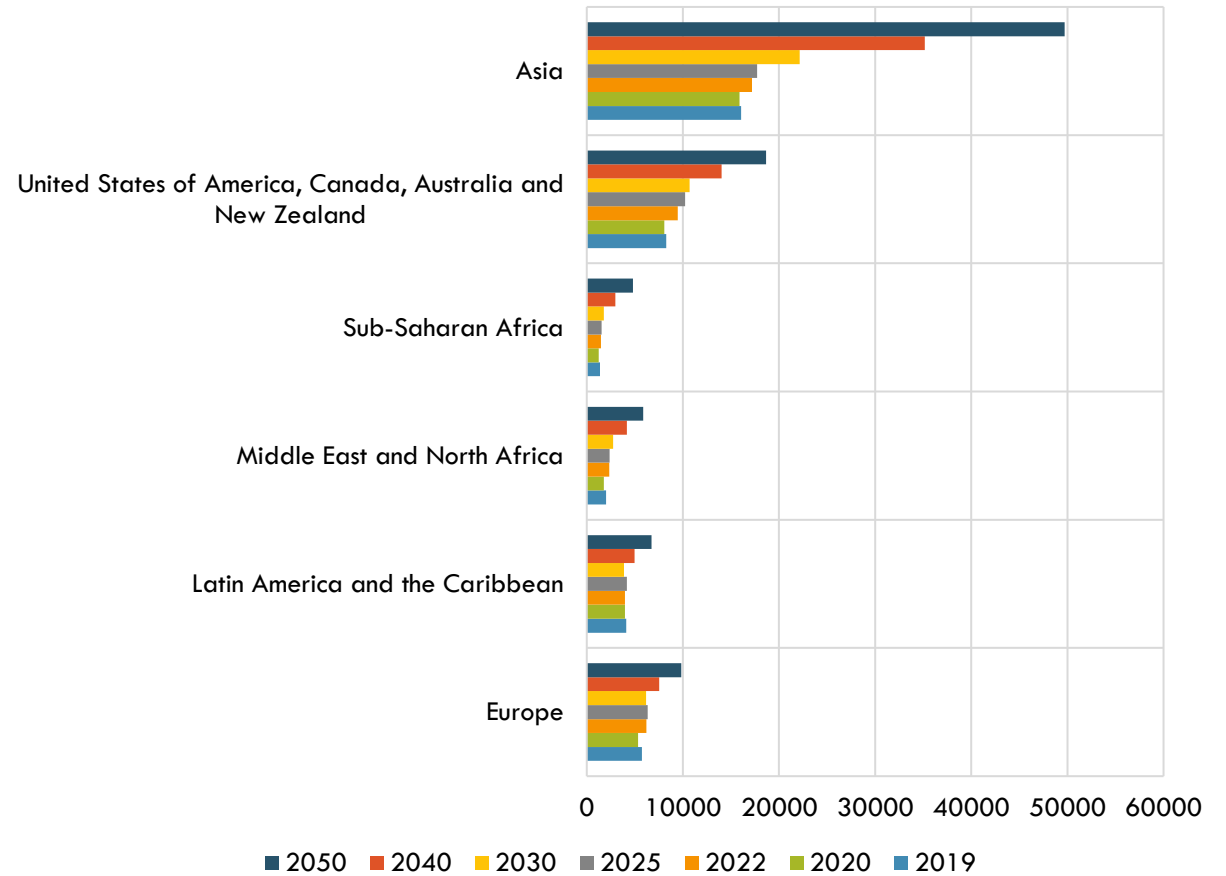
3. Improving Connectivity and Freight

Logistics performance index ranking of countries, by region and income level



Source: ATO analysis and visualization using data from World Bank (2023b)

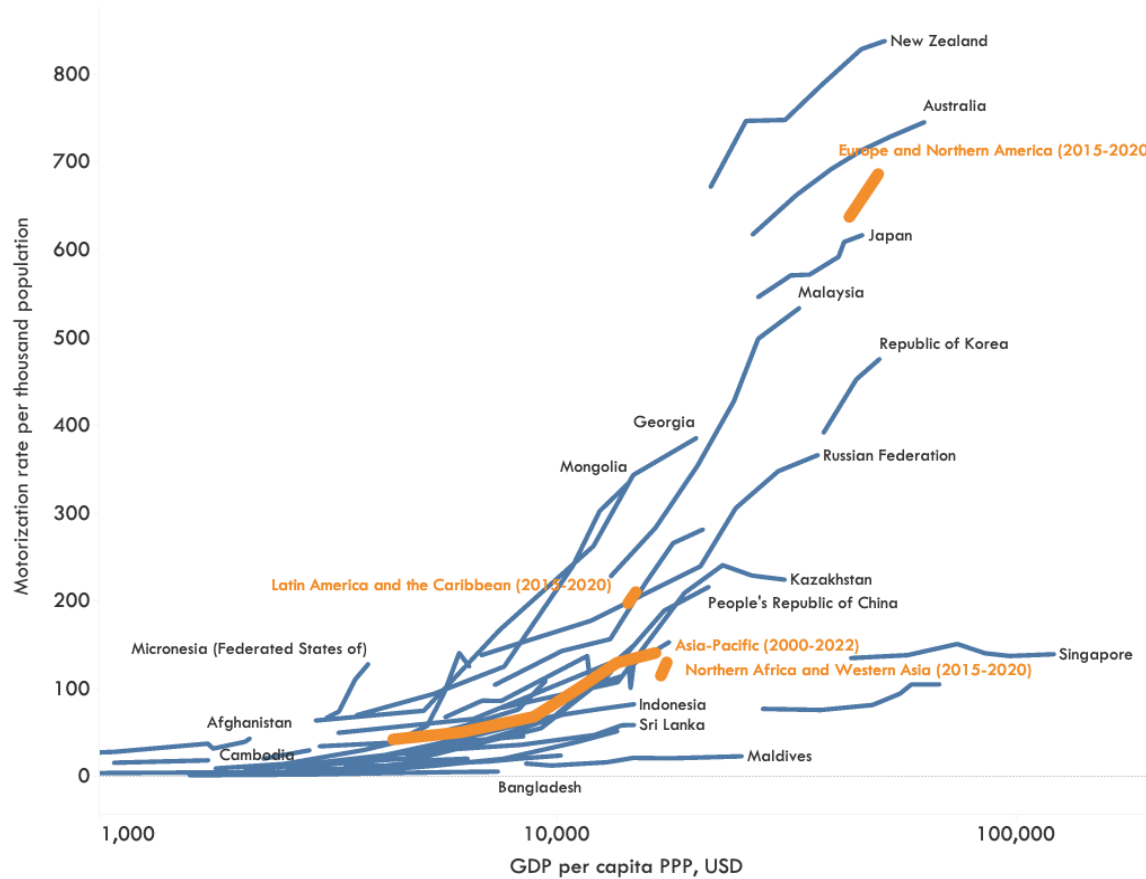
Domestic Freight Kilometer Travel (Billions)



Source: ITF Outlook 2023

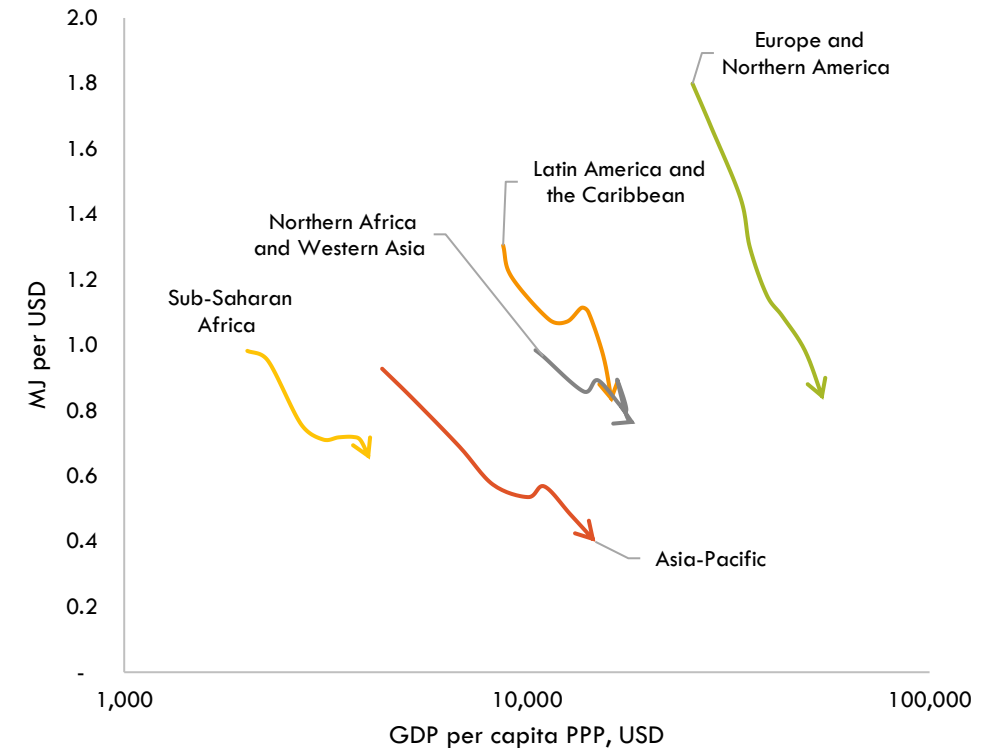
4. Improving Efficiency of Transport Systems

Motorization rate per thousand population, 2000-2022



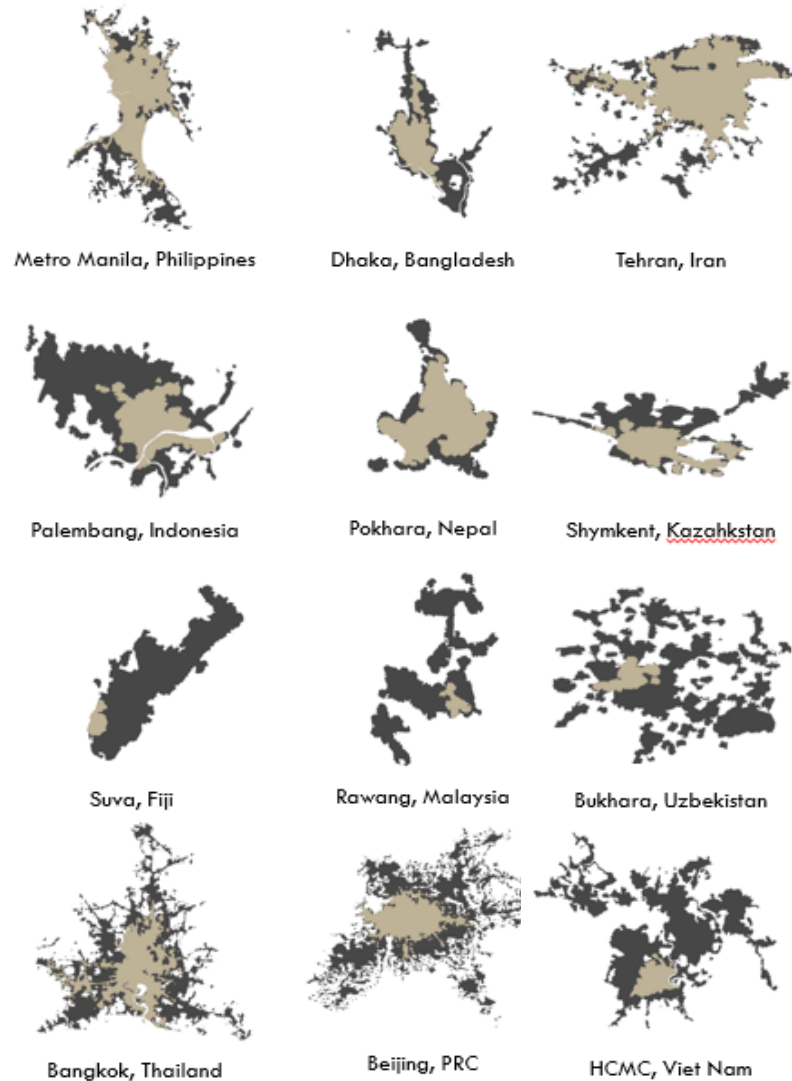
Source: ATO analysis and visualization based on official country statistics

Transport energy consumption intensity with GDP, 2000-2021

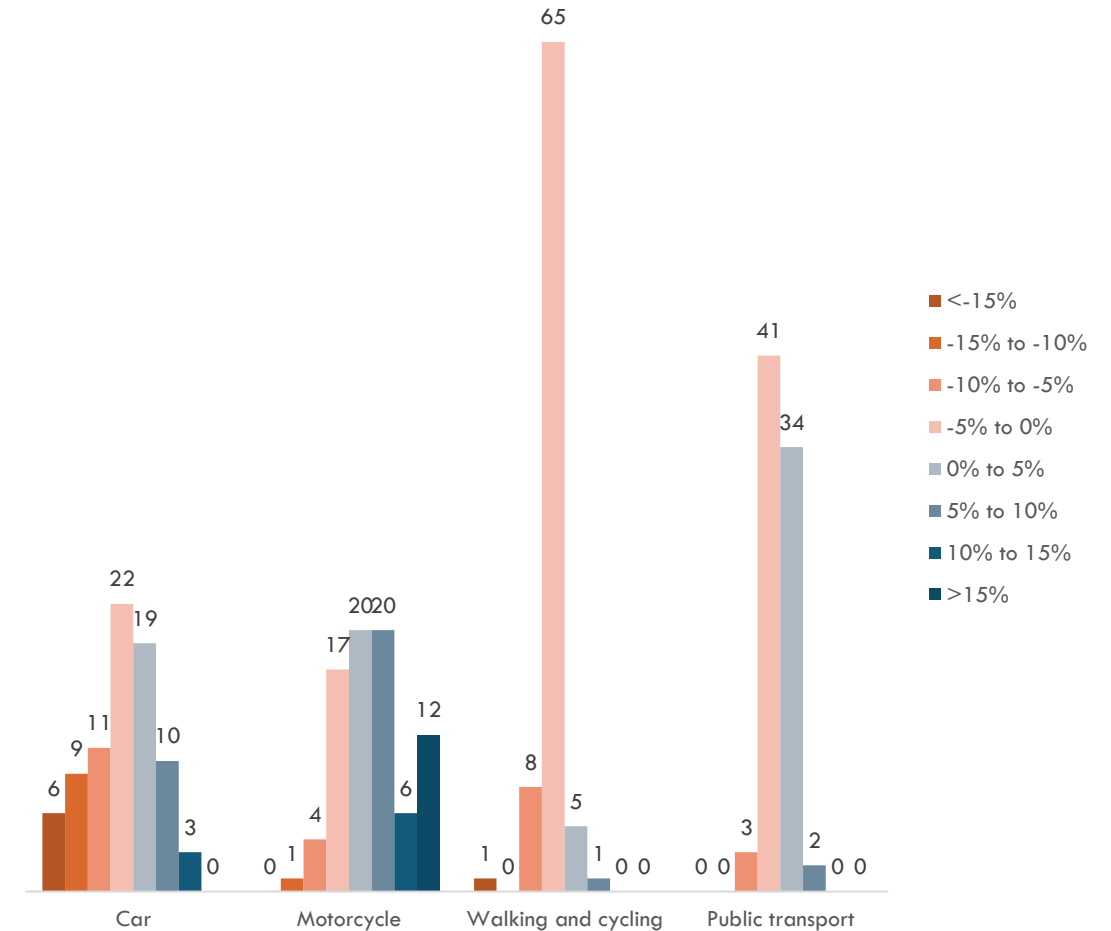


Source: ATO visualization based on data from United Nations Statistics Division (2024) and World Bank (2023)

5. People-Centered Urban Mobility and Livable Cities



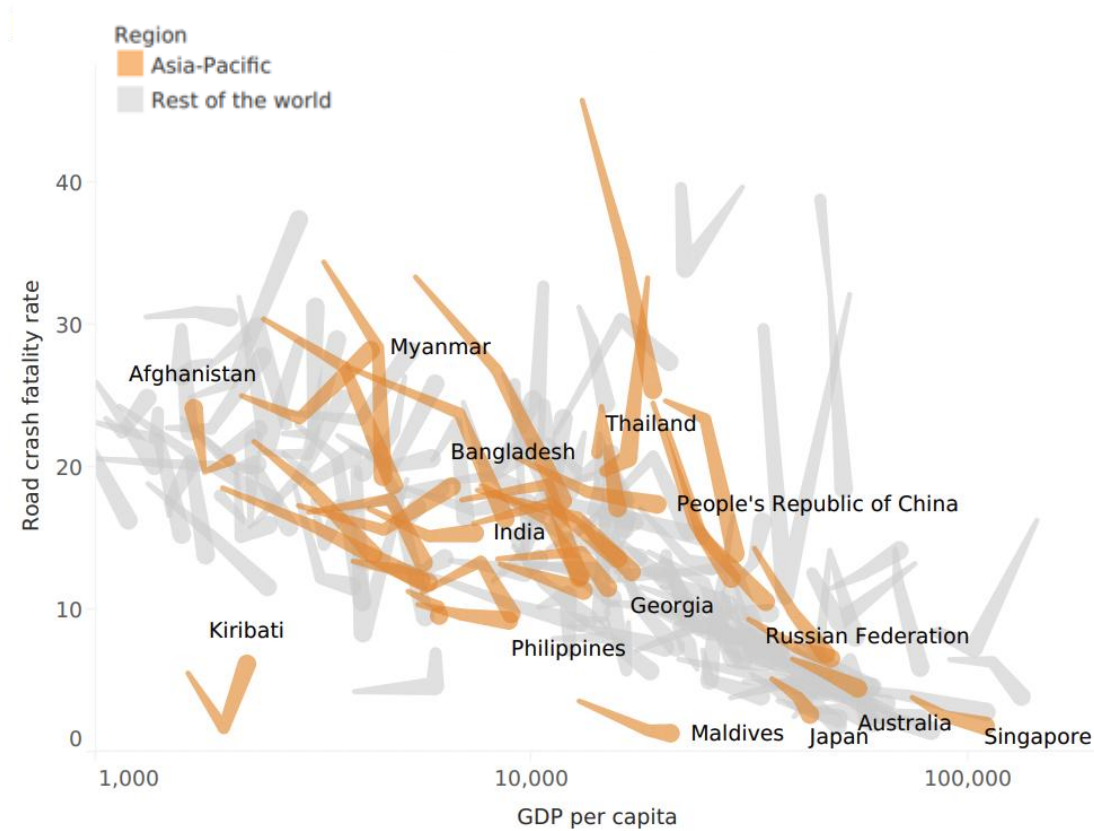
Modal shift in 80 cities between 2018 to 2023



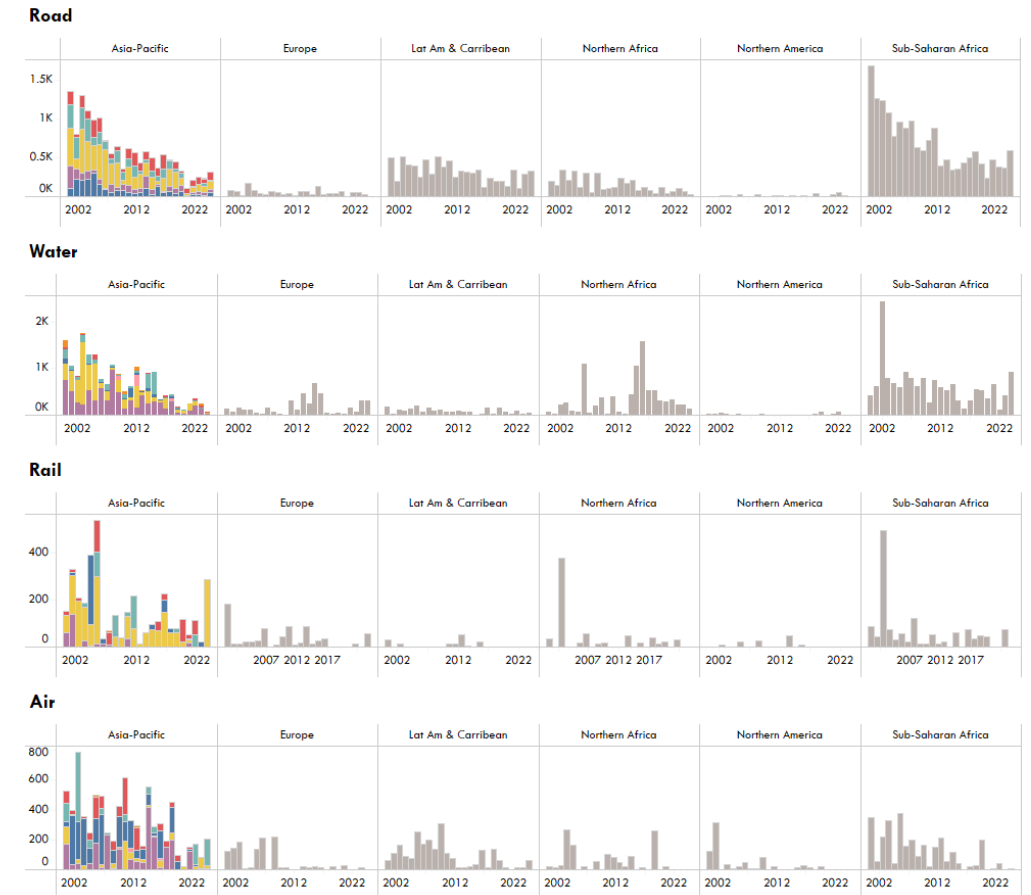
Source: ATO analysis and visualization using data from Google (2025)

6. Making Transport Safe and Secure

Road crash fatality rate, 2010-2021



Number of deaths due to transport-related disaster events

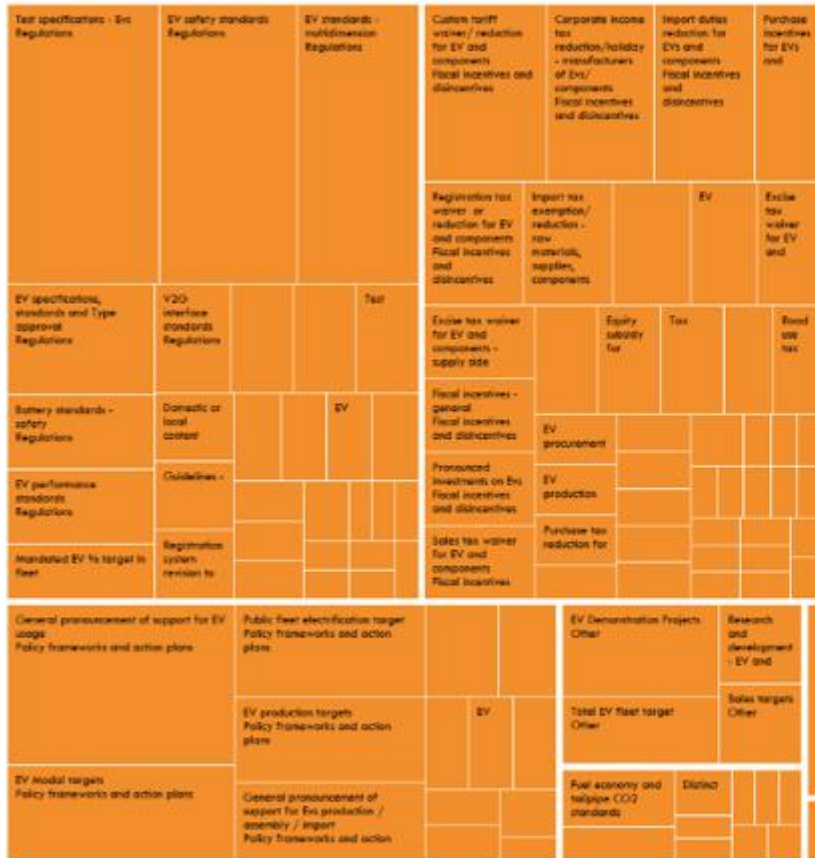


Source: Own analysis and visualization based on data from WHO (2023)

7. Leveraging on Science, Technology and Innovation

E-mobility Policy Measures

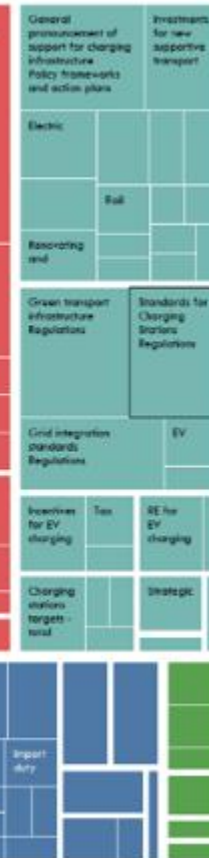
EVs and EV components



General



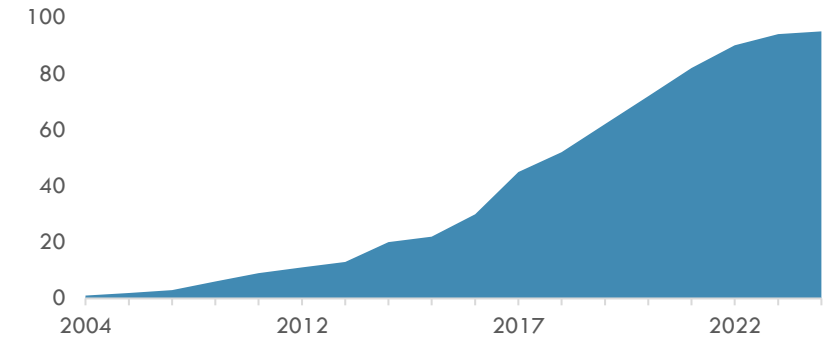
Infrastructure



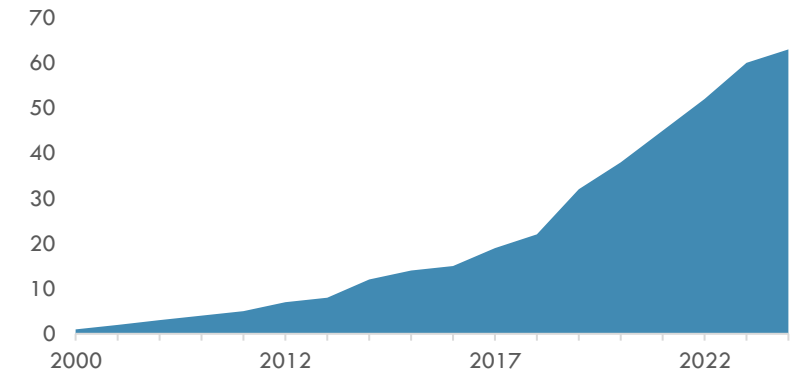
Charging Equipment & components

Services

Cumulative Measures "Tech and Knowledge Transfer"

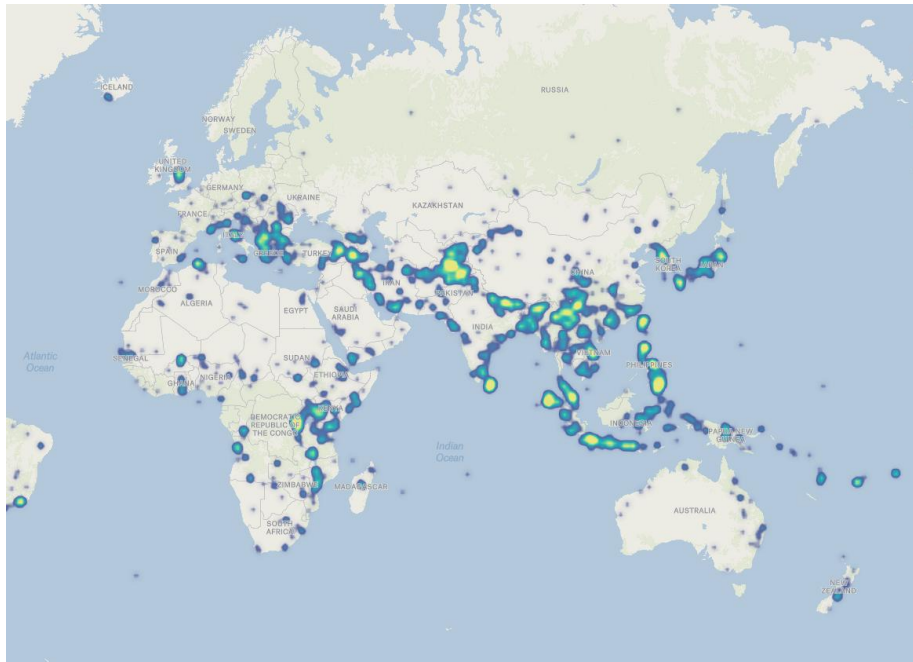


Cumulative Measures "Digitalization"



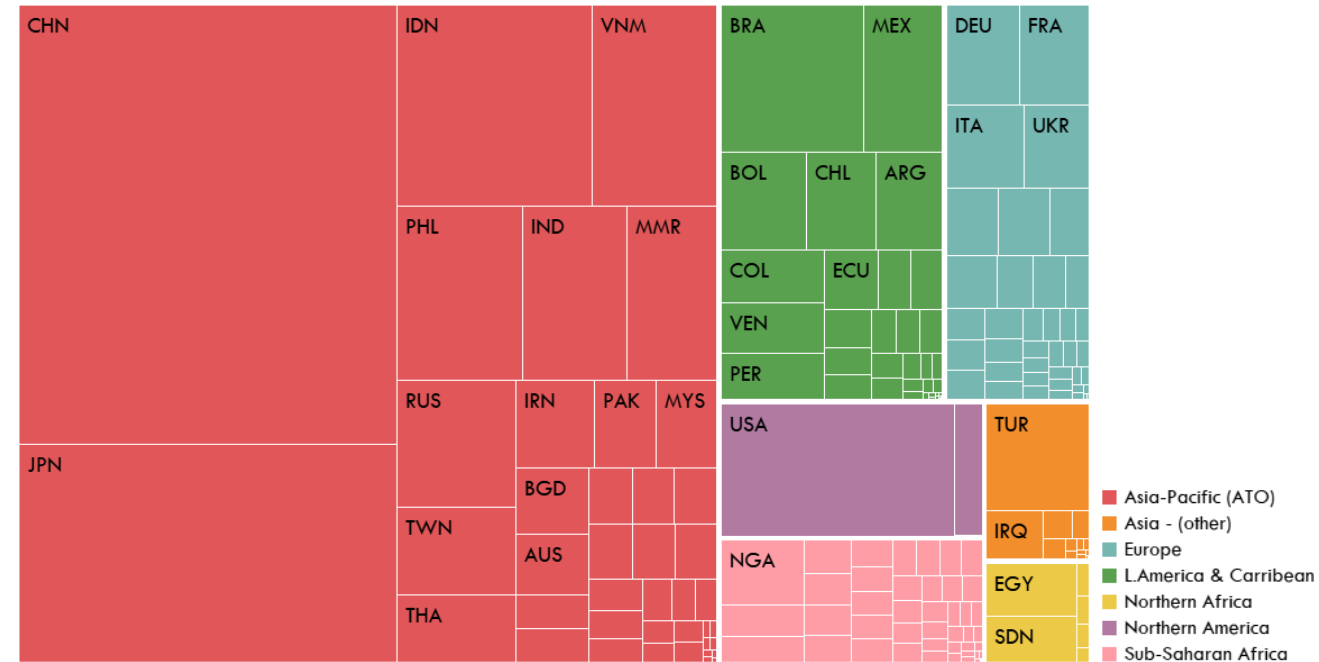
8. Building Resilient Infrastructure and Transport Systems

Distribution of Disaster Events (2000-2025)



Source: ATO analysis and visualization based on Centre for Research on the Epidemiology of Disasters (2025)

Multi-hazard Expected Annual Financial Damages to Transport Infrastructure by Region and Country



Source: ATO Visualization based on Koks et al. (2019)



AVOID biased and unbalance data representation



AVOID unverifiable transport data



AVOID “blame and shame” approach to monitoring



SHIFT focus to all dimensions of the transport sector



SHIFT focus to transport policies



SHIFT focus towards benchmarking for contextualisation



IMPROVE storytelling in making data meaningful



IMPROVE the capacity of data generators



IMPROVE and expand the data framework over time



IMPROVE partnerships



ALLOCATE adequate flexible funding for monitoring

asiantransportobservatory.org

***“ATO translates data into
insights, policies, and
investments”***

ATO Team	info@asiantransportobservatory.org
Jamie Leather	jleather@adb.org
Andres Pizarro	andres.pizarro@aiib.org
Manuel Benard	manuel.benard@aiib.org
Alvin Mejia	alvin.mejia@asiantransportobservatory.org
Sudhir Gota	sudhirgota@asiantransportobservatory.org
Mel Francis Eden	meleden@asiantransportobservatory.org
Adwait Limaye	adwait@asiantransportobservatory.org
Benjamin Soco	benjaminsoco@asiantransportobservatory.org